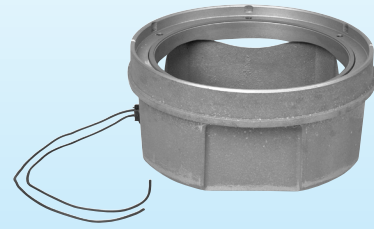


SIB-A12

Shallow Inset Light Base - 12" Aluminum



SIB

Applications

The SIB (Shallow Inset Base) is a load-bearing base designed to mount a 12" diameter inset fixture (11.25 DBC) into a taxiway or runway pavement location.

Features

- **Anodized cast aluminum** - C-H recommends use with like-metals
- Vertical casting recesses prevent rotation in pavement when set into epoxy
- Horizontal casting flange prevents base from lifting out of pavement when set into epoxy
- Secondary plug(s) inside the base for ease of maintenance and light fixture removal
- Mechanical feed-thru with watertight seal

Accessory

P/N 19583 Installation Fixture

Ordering Information



Fixture Type:

Connection Type:

- 1 = One feed-thru (2 conductors) entry at location "1" in Base side
- 2 = Two feed-thru (4 conductors) entry at location "1" & "2" in Base side
- 3 = Bottom entry thru flexible grommet for 2 inch (2.375 O.D.) pipe

Entry Location: (Type 1 & 2 Connection)

- A = 0° (Parallel to alignment notch)
- B = 90° (Perpendicular to alignment notch)

Option:

GE = Ground, External

Outline Drawing

Dimensions:	inches (mm)
Instruction Manual:	2408
Shipping Weight:	21238 18.0lbs. 8.2 kg
Shipping Volume:	1.0 cu. ft. 0.028 m ³

