

Plugs and Receptacles Industrial Heavy Duty Interlocked Non-Hazardous

3P

Description	Page No.
Application/Selection	1016, 1017
Interlocked Receptacle with –	
Disconnect Switch	
WSR 30, 60, 100A Aluminum	1018, 1019
WSRD 30, 60, 100A Sheet Metal	1018, 1019
WSRDW 30, 60, 100A Viewing Window	1018, 1019
WSRD SM S901 Stainless Steel	1020-1022
DSR 30, 60, 100A Aluminum	1036
Arktite Welder Series Interlocked Power Module	1027
Rotary Switch	
CSR 30 & 60A Non-metallic NEMA 4X	1024-1026
SRG/SP 30, 60 & 100A	1028, 1029
WSQC 30 & 60A Aluminum	1037
Circuit Breaker	
DBR 30, 60 & 100A Aluminum	1030, 1031
Watertight Krydon® NEMAX 4X	
NSR 30, 60 & 100A Switch	1032, 1033
NBR 30, 60 & 100A Breaker	1034, 1035

Application:

- Where extra protection is a requirement. Interlocked units provide dead front receptacles; connection cannot be made or broken when unit is under load
- In areas where dirt, moisture, and corrosion are a problem; to supply power for portable electrical equipment and provide safe disconnect means and short circuit protection

Considerations for Selection:**Environmental:**

- The environment of the enclosure location in terms of NEMA/EEMAC type required
- Material and construction to withstand rough usage and corrosive atmospheric conditions

Electrical:

- Sufficient current carrying capacity to meet load requirements
- Compatibility with electrical system (new or existing installations)

- Interchangeability of plugs with hazardous and non-hazardous area receptacles

Function:

- Switch vs. circuit breaker
- See "Quick Selector Chart" below and "Interchangeability Chart" on page 1017 for guidance.

Options:

Special polarity and conduit arrangements are available to meet specific needs. See individual listing pages for details.

Quick Selector Chart

Series	Receptacle Interlocked With	NEMA/EEMAC Rating	Mating Plug	Electrical Characteristics	
CSR	Disconnect switch	3,4X,12	APJ/NPJ	Circuit breaker: 30, 60 amp 600VAC Fusible or non-fusible	Receptacle: 30, 60 amp 600VAC 3-wire, 4-pole
DBR	Circuit breaker	3,9F,G,12 NEC: Cl. II, Division 1 and 2, Groups F,G Cl. III CEC: Cl. II, Division 1 and 2, Group G Cl. III	APJ/NPJ	Circuit breaker: 100 amp. frame size 250VDC/600VAC	Receptacle: 30, 60, 100 amp. 250VDC/600VAC 3-wire, 3-pole 3-wire, 4-pole
DSR	Disconnect switch	3,12	APJ	Switch: 60 and 100 amp 250VDC/600VAC 3-pole Fusible or non-fusible	Receptacle: 60 and 100 amp. 250VDC/600VAC 3-wire, 4-pole
NBR	Circuit breaker	3,12	APJ/NPJ	Circuit breaker: 100 amp. frame size 250VDC/600VAC 3-pole	Receptacle: 30, 60, 100 amp. 250VDC/600VAC 3-wire, 3-pole 3-wire, 4-pole
NSR	Disconnect switch	3,12	APJ/NPJ	Switch: 30, 60, 100 amp. 250VDC/240VAC 600VAC 3-pole Fusible or non-fusible	Receptacle: 30, 60, 100 amp. 250VDC/600VAC 3-wire, 3-pole 3-wire, 4-pole
SRG	Rotary switch		SP	Switch: 30, 60, 100 amp. 480VAC	Receptacle: 30, 60, 100 amp. 480VAC 2-wire, 3-pole 3-wire, 4-pole 4-wire, 5-pole
WSR	Disconnect switch	3,4,12	APJ/NPJ	Switch: 30, 60, 100 amp. 250VDC/240VAC 600VAC 3-pole Fusible or non-fusible	Receptacle: 30, 60, 100 amp. 250VDC/600VAC 3-wire, 3-pole 3-wire, 4-pole
WSRD	Disconnect switch	12	APJ/NPJ	Switch: 60 amp. 250VDC/240VAC 600VAC 3-pole Fusible or non-fusible	Receptacle: 60 amp. 250VDC/600VAC 3-wire, 3-pole 3-wire, 4-pole

Plugs and Receptacles

3P

Industrial Heavy Duty Interlocked Interchangeability Chart

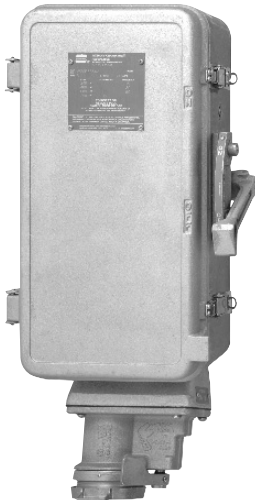
Interchangeability Chart

Many of the plugs listed in this section can be used interchangeably with receptacles from other sections, both in hazardous and non-hazardous areas, **provided electrical rating and style of plug and receptacle are the same**. The following table is a summary of possible combinations.

Plugs Shown in Section 3P	Can be Used with these Receptacle Series	Listed in Section	Plug & Receptacle Electrical Rating
AP	AR	1P	200 and 400 amp. 3-wire, 4-pole
APJ/NPJ	AR	1P	30, 60, 100 amp.
	DR	2P	3-wire, 3-pole
	DBR, EBBR	4P	3-wire, 4-pole
	FSQ, EPC, EPCB	4P	
SP	BHR	4P	30, 60, 100 amp.
			2-wire, 3-pole
			3-wire, 4-pole
			4-wire, 5-pole

WSR, WSRD, WSRDW Interlocked Arktite® Receptacles with Enclosed Disconnect Switches

30,60,100A
NEMA 3,3R,4,4X,12
Raintight
Watertight
Corrosion-Resistant



WSR
Aluminum
NEMA 3R,12



WSRD
Sheet Metal
NEMA 3R,12



WSRDW
Sheet Metal
Viewing Window
NEMA 3R,12

Application:

- The WSR and WSRD disconnect switches are used as a service outlet for portable or fixed electrical equipment – generators, compressors, welders, etc.
- They are designed for use in non-hazardous areas where dust, moisture and corrosion may be a problem.
- Designed for flush or surface mounting.
- A fusible type switch, when used, also provides short circuit protection.

Features:

WSR and WSRD:

- Switches are NEMA type HD heavy duty **3-pole**, with visible blades; a quick make-and-break mechanism with reinforced, positive pressure type blade and jaw construction. Fusible types have fuse clips with steel reinforcing springs of positive pressure type. Pressure connectors are used for wire connectors.
- For maximum safety, the spring door receptacle at the bottom of the unit is mechanically interlocked with the switch operating mechanism. The switch *cannot be closed* until the plug is fully inserted and the plug *cannot be withdrawn or inserted* unless the switch is open. With the switch open, *accidental plug withdrawal is prevented* by the interlock mechanism. Withdrawal can only be accomplished by activation of the interlock release lever located on the receptacle.
- Enclosures are compact and rectangular in shape with a gasketed, hinged door.
- Enclosure, handle and other exterior parts are corrosion resistant.

- The switch enclosure covers are interlocked with the body and operating mechanism and cannot be opened when the plug is engaged and the switch is closed ("ON"). When the switch *is open*, the switch *cannot be put* in a closed ("ON") position with the door open.

WSR:

- Mounting lugs may be rotated 90° or moved to the vertical centerline portion for pole mounting.
- Side hinged covers are retained in a closed position by compression spring draw-pull catches, which permit the opening or closing of the cover without tools.
- The switch operating handle may be padlocked in the "ON" or "OFF" position, thereby preventing unauthorized operation of the switch and/or opening of the enclosure. Up to three padlocks may be used. In addition, a unique hinge arrangement has been devised to allow the door of the unit to be padlocked. This feature allows operation while preventing unqualified or unauthorized entry.

Standard Materials:

WSR and WSRD:

- Receptacle housings and plug exteriors – copper-free aluminum
 - Insulation (plug and receptacle) – fiberglass-reinforced polyester
 - Pressure contacts – brass
 - Crimp/solder contacts – leaded red brass
- WSR:
- Enclosure – copper-free aluminum
 - Operating handle – copper-free aluminum
 - Other exterior parts – stainless steel
- WSRD:
- Enclosure – sheet steel
 - Operating handle – sheet steel
 - Other exterior parts – stainless steel

Standard Finishes:

- Copper-free aluminum – WSR enclosure, plug exteriors – natural
- Leaded red brass – electro-tin-plate
- Brass – natural
- Sheet steel – baked grey enamel
- Fiberglass-reinforced polyester – natural (red)

Electrical Rating Ranges:

- 3 and 4 pole; fusible or non-fusible; 240 vac, 250 vdc; 600 vac
- 30, 60, 100 amperes
- 7½ to 75 HP

Certifications and Complies:

WSR:

- NEMA 3R, 4, 12 (enclosure)
- UL Standard 98

WSRD:

- NEMA 3R, 12
- UL Standard 98

Options:

- Interiors rotated 22½° to the right (viewed from face) – add suffix S4 to Cat. No.
- Auxiliary switch, 600 vac-dc heavy duty push button station rating, can be supplied, and its contacts will close after safety switch contacts open and close before safety switch opens..... S483

◆◆ Pressure connectors are supplied as standard. To specify crimp/solder type terminations, add the suffix "T" to the catalog number. For example: APJ3375-T (Plug)

WSR, WSRD, WSRDW Interlocked Arktime® Receptacles with Enclosed Disconnect Switches

APJ/NPJ Plugs

30,60,100A
NEMA 3,3R,4,4X,12
Raintight
Watertight
Corrosion-Resistant

3P



			WSR				WSRD†® For viewing window see note 2		
System	Amps	Conduit Opening Sizes§	240VAC 600VAC 250VDC Cat. #	Max. HP Rating 240VAC	Max. HP Rating 480VAC	Max. HP Rating 600VAC	600VAC 250VDC Cat. #	Max.① HP Rating 480VAC	Max.① HP Rating 600VAC
3-Wire, 3-Pole Style 1, Fusible	30	1	WSR3351*	7½	15	20	WSRD3351*	15	20
	60	1¼	WSR6351*	15	30	50	WSRD6351*	30	50
	100	1½	WSR10351*	30	60	75	WSRD10351*	60	75
3-Wire, 4-Pole Style 2, Fusible	30	1	WSR3352*	7½	15	20	WSRD3352*✓	15	20
	60	1¼	WSR6352*✓	15	30	50	WSRD6352*✓	30	50
	100	1½	WSR10352*	30	60	75	WSRD10352*✓	60	75
3-Wire, 3-Pole Style 1, Non- Fusible	30	1	WSR33541	7½	15	20	WSRD33541	15	20
	60	1¼	WSR63541	15	30	50	WSRD63541✓	30	50
	100	1½	WSR103541	30	60	75	WSRD103541	60	75
3-Wire, 4-Pole Style 2, Non- Fusible	30	1	WSR33542	7½	15	20	WSRD33542	15	20
	60	1¼	WSR63542✓	15	30	50	WSRD63542✓	30	50
	100	1½	WSR103542	30	60	75	WSRD103542	60	75

APJ/NPJ Plugs

Amps	Max. Volts	Outside Dia. of Cable, Flexible Conduit or Armored Cable	Style 1† 3-wire, 3-pole Cat. #	Style 2† 3-wire, 4-pole Cat. #
30	250 DC	0.60 to 1.20	APJ3375	APJ3485✓
	600 AC	0.55 to .070		NPJ3483✓
		0.70 to 0.85		NPJ3484✓
60	250 DC	0.75 to 1.45	APJ6375✓	APJ6485✓
	600 AC	0.75 to 1.07		NPJ6484✓
		1.07 to 1.35		NPJ6485✓
100	250 DC	1.00 to 1.70	APJ10377	APJ10487✓
	600 AC	0.93 to 1.21		NPJ10486✓
		1.21 to 1.50		NPJ10487✓

* Arranged for NEC Class H fuses. May be field converted to NEC Class J fuses.

§ Furnished with reducer which may be removed to obtain one size larger opening. Locknut and bushing used must meet NEC requirements. (WSR only).

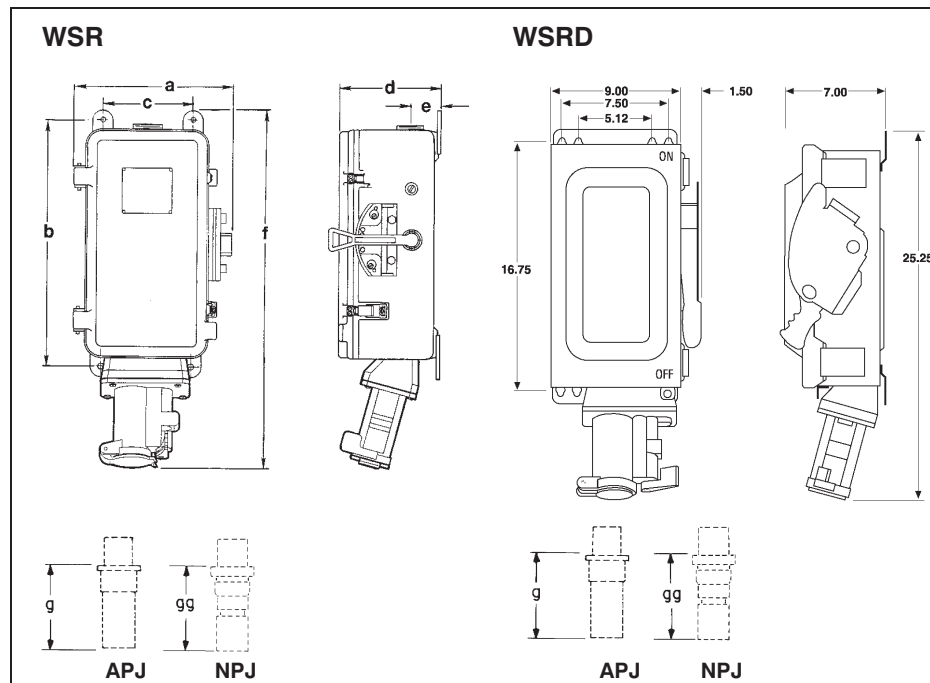
† Style 1 – Grounded through shell. Style 2 – Grounded through extra pole and shell. For a detailed description of these grounding methods, see page 966.

‡ Conduit entrances not furnished.

① Ratings of unfused and fusible switches with time delay fuses.

② Viewing window – add “W” to prefix, i.e.: WSRDW6352.

Dimensions



WSR

Amps.	30	60	100
a	11¾	11¾	14⅞
b	20⅛	20⅛	26⅝
c	6⅞	6⅞	9⅞
d	7¼	7¼	8¼
e	2⅞	2⅞	2⅞
f	27⅞	28⅞	35⅞
g	4¾	5¼	7¼
gg	7	6⅞	7¾
Mtg. Holes	⅜	⅜	7/16

WSRD

60 Amps.	
g	5⅞
gg	6⅞
Mtg. Holes	5/16

Dim. “g” and “gg” are exposed portion of plug when engaged with receptacle.

✓ – available with Lightning Service™ delivery. See Section G for complete details.

3P

Arktite® WSRD SMS901 Stainless Steel Interlocked Receptacles

Fused and Non-Fused

30, 60 and 100 Amp
Enclosure Type 3,4,4X,12
IP66
UL and cUL Listed

Watertight
Corrosion-Resistant



WSRD SMS901 SERIES STAINLESS STEEL ARKTITE® INTERLOCKED RECEPTACLES

Cooper Crouse-Hinds Arktite Stainless Steel Interlocks prevent engagement and disengagement of the plug under load, providing safe portable connections and extended product life.

Available in 30-100 Amp in both fused and nonfused versions, the Stainless Steel Interlock is rated Enclosure Type 4X watertight and features an optional viewing window.

Arktite stainless steel interlocked receptacles:

- supply power to portable or fixed electrical equipment such as welders, compressors, conveyors, portable tools, lighting systems and similar equipment.
- are used in damp or corrosive locations.
- are ideal for use in wet locations & hosedown areas.



Optional window allows viewing of both visible blade and indicating type fuses

Durable enclosure design features a gasket flange with continuously welded seams that stays in place when cover is opened

Corro-Free™ epoxy powder coat for even greater outdoor weatherability

Locking ring on the APJ/NPJ Arktite plug threads onto the receptacle, providing positive, worry free power engagement and a watertight environmental seal

Threaded front cap ensures watertight rating white plug is not engaged

Field proven direct drive interlock provides positive locking action every time

ADDITIONAL FEATURES AND BENEFITS

- Heavy duty Arktite receptacle is compatible with existing Cooper Crouse-Hinds Arktite plugs of same rating and configuration.
- Self-wiping, naval brass contacts in receptacle assure reliable performance and long dependable life
- Stainless steel interior hardware.
- Ground bar supplied as standard and connected to 4th wire in receptacle.
- UL and cUL Listed

ORDERING INFORMATION (3 Pole, 4 Wire - 600 VAC)

Amps	Catalog Number	Description	Weight lbs.	Cooper Crouse-Hinds Mating Arktite Plug Catalog Numbers
30	WSRDW3352SMS901	Fused w/Window	24	APJ3485 & NPJ3485
30	WSRD33542SMS901	Non-Fused	22	APJ3485 & NPJ3485
30	WSRDW33542SMS901	Non-Fused w/Window	22	APJ3485 & NPJ3485
60	WSRDW6352SMS901	Fused w/Window	30	APJ6485 & NPJ6485
60	WSRD63542SMS901	Non-Fused	29	APJ6485 & NPJ6485
60	WSRDW63542SMS901	Non-Fused w/Window	29	APJ6485 & NPJ6485
100	WSRDW10352SMS901	Fused w/Window	36	APJ10487 & NPJ10487
100	WSRD103542SMS901	Non-Fused	35	APJ10487 & NPJ10487
100	WSRDW103542SMS901	Non-Fused w/Window	35	APJ10487 & NPJ10487

Interlocked
Plugs and
Receptacles



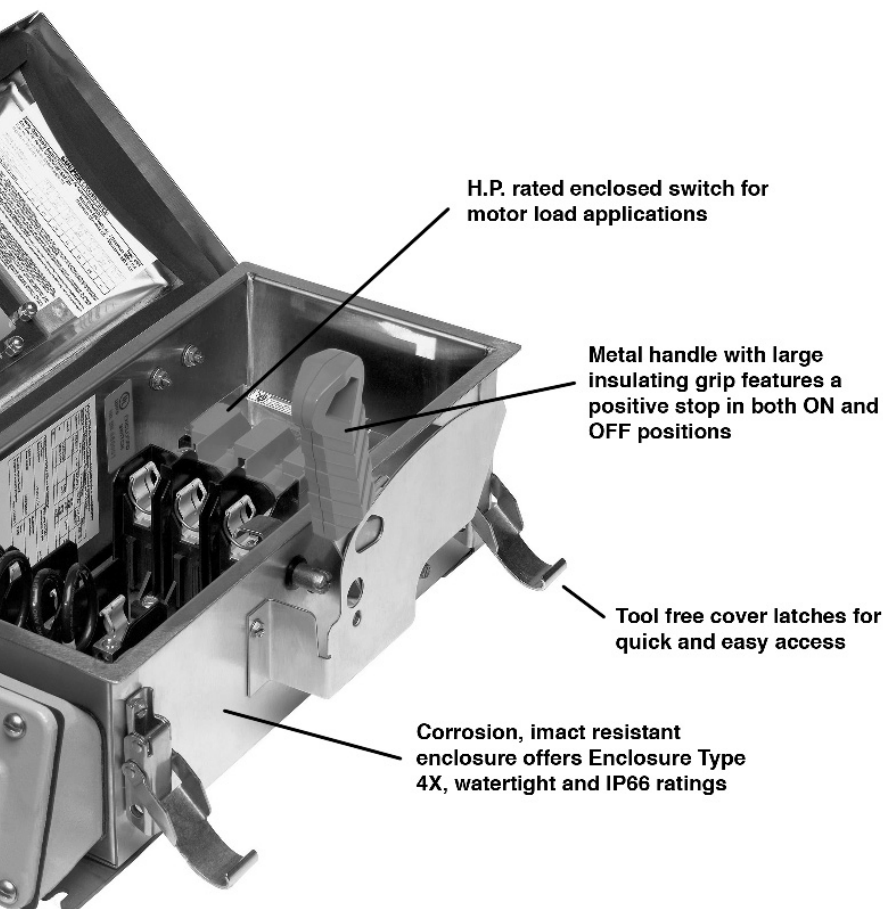
Arktime® WSRD SM S901 Stainless Steel Interlocked Receptacles

Fused and Non-Fused

30, 60 and 100 Amp
Enclosure Type 3,4,4X,12
IP66
UL and cUL Listed

Watertight
Corrosion-Resistant

3P



H.P. rated enclosed switch for motor load applications

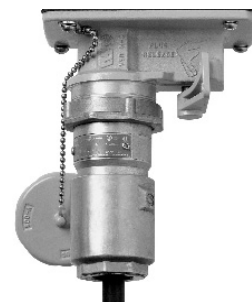
Metal handle with large insulating grip features a positive stop in both ON and OFF positions

Tool free cover latches for quick and easy access

Corrosion, impact resistant enclosure offers Enclosure Type 4X, watertight and IP66 ratings



Optional window allows viewing of both visible blade and indicating type fuses.



Plug locks into receptacle, providing positive, worry-free power engagement as well as watertight protection



Complies with OSHA lockout/tagout requirements



Heavy-duty, epoxy coated cast aluminum receptacle with stainless steel interlocking mechanism for superior durability and corrosion resistance.

CERTIFICATIONS AND COMPLIANCES

- UL Listed - (UL Standards 508, 1682)
- cUL Listed (Certified by UL to CSA Standards C22.2 Nos. 14, 182.1)
- Enclosure Type 3, 4, 4X, 12
- IP66 Enclosure

STANDARD MATERIALS

- Enclosure - Type 304 stainless steel
- Hardware - stainless steel
- Receptacle Housing - aluminum
- Power Contacts - naval brass
- Interlock Mechanism - stainless steel

STANDARD FINISHES

- Stainless Steel - natural
- Aluminum - Corro-free[®] epoxy powder
- Brass - natural

OPTIONS

Description

- Factory Installed Auxiliary ContactsS483
- Rotated Interior (22 1/2 degrees to right)S4

Suffix to be added to Cat. #

3P

Arktite® WSRD SM S901 Stainless Steel Interlocked Receptacles

Fused and Non-Fused

30, 60 and 100 Amp
Enclosure Type 3,4,4X,12
IP66
UL and cUL Listed

Watertight
Corrosion-Resistant

HORSEPOWER RATINGS

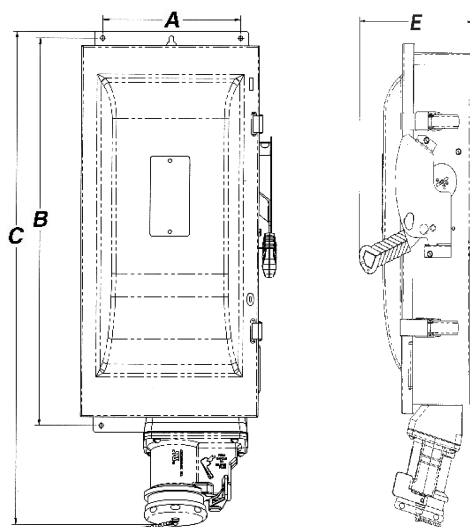
Cooper Crouse-Hinds Catalog Number	Amps	Fusing	240 VAC (1 PH)	240 VAC (3 PH)	480 VAC (1 PH)	480 VAC (3 PH)	600 VAC (1 PH)	600 VAC (3 PH)	250 VDC
WSRD33542SMS901	30	Non-Fused	5	10	7.5	20	10	30	5
WSRDW33542SMS901	30	Non-Fused	5	10	7.5	20	10	30	5
WSRDW3352SMS901	30	Fused	1.5 (3)	3 (7.5)	3 (7.5)	5 (15)	3 (10)	7.5 (20)	5
WSRD63542SMS901	60	Non-Fused	10	20	20	50	25	60	10
WSRDW63542SMS901	60	Non-Fused	10	20	20	50	25	60	10
WSRDW6352SMS901	60	Fused	3 (10)	7.5 (15)	5 (20)	15 (30)	10 (25)	15 (50)	10
WSRD103542SMS901	100	Non-Fused	15	40	30	75	40	100	20
WSRDW103542SMS901	100	Non-Fused	15	40	30	75	40	100	20
WSRDW10352SMS901	100	Fused	7.5 (15)	15 (30)	10 (30)	25 (60)	15 (40)	30 (75)	20

NOTE:

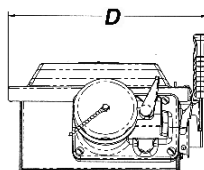
Values for Non-Fused units are maximum horsepower.

Values for Fused units are standard horsepower with standard fuse and (maximum horsepower with time delay).

DIMENSIONS (Inches)



Amps	A	B	C	D	E
30	5.47	16.49	23.49	9.00	8.61
60	7.99	18.49	25.49	11.52	8.61
100	8.47	24.18	31.18	12.00	8.61



Notes Page

[illegible]

3P

Arktite® CSR Series Nonmetallic Interlocked Receptacles

Fused and Non-Fused

30, 60 and 100 Amp
Enclosure Type 3,4,4X,12
IP66
UL and cUL Listed

Watertight
Corrosion-Resistant



CSR SERIES COMPACT INTERLOCKED ARKTITE® RECEPTACLES

Cooper Crouse-Hinds interlocked receptacles prevent engagement and disengagement of the plug under load, providing safe portable connections and extended product life.

Arktite compact interlocked receptacles are used:

- to supply power to portable or fixed electrical equipment such as welders, compressors, conveyors, portable tools, lighting systems and similar equipment.
- in damp or corrosive locations.
- in wet locations.
- in hosedown areas.

Threaded front cap ensures watertight rating while plug is not engaged

Locking ring on the APJ/NPJ Arktite plug threads onto the receptacle, providing positive, worry free power engagement and a watertight environmental seal

Field proven direct drive interlock provides positive locking action every time

Corro-free™ epoxy powder coated receptacle for even greater outdoor weatherability

Self-wiping, naval brass contacts in receptacle assure reliable performance and long dependable life

Innovative cover break line provides easy wiring access

Large rotary handle is easy to operate even with gloved hands

Corrosion, impact resistant enclosure offers Enclosure Type 4X, watertight, IP66 rating

ADDITIONAL FEATURES AND BENEFITS

- Enclosure Type 4X, Watertight, IP66.
- Compact enclosure is designed to fit into the web of an I-beam.
- Heavy duty Arktite® receptacle is compatible with existing Cooper Crouse-Hinds Arktite® plugs of same rating and configuration.
- Bussmann® CubeFuse™ with Indicator – the world's first "finger-safe" industrial power fuse.
- Front mounted handle permits the interlocked receptacles to be easily mounted side by side or in tight spots.
- Molded-in-place mounting feet require only four screws to mount the entire unit.
- UL and cUL Listed

ORDERING INFORMATION (600 VAC)

Amps	Configuration	Hub Size	Fusing	Catalog Number	Mating Catalog Number
30	3W, 4P	1"	Fused	CSR3352	APJ3485/NPJ3484
30	3W, 4P	1"	Non-Fused	CSR33542	APJ3485/NPJ3484
60	3W, 4P	1¼"	Fused	CSR6352	APJ6485/NPJ6484
60	3W, 4P	1¼"	Non-Fused	CSR63542	APJ6485/NPJ6484



Interlocked
Plugs and
Receptacles
3P

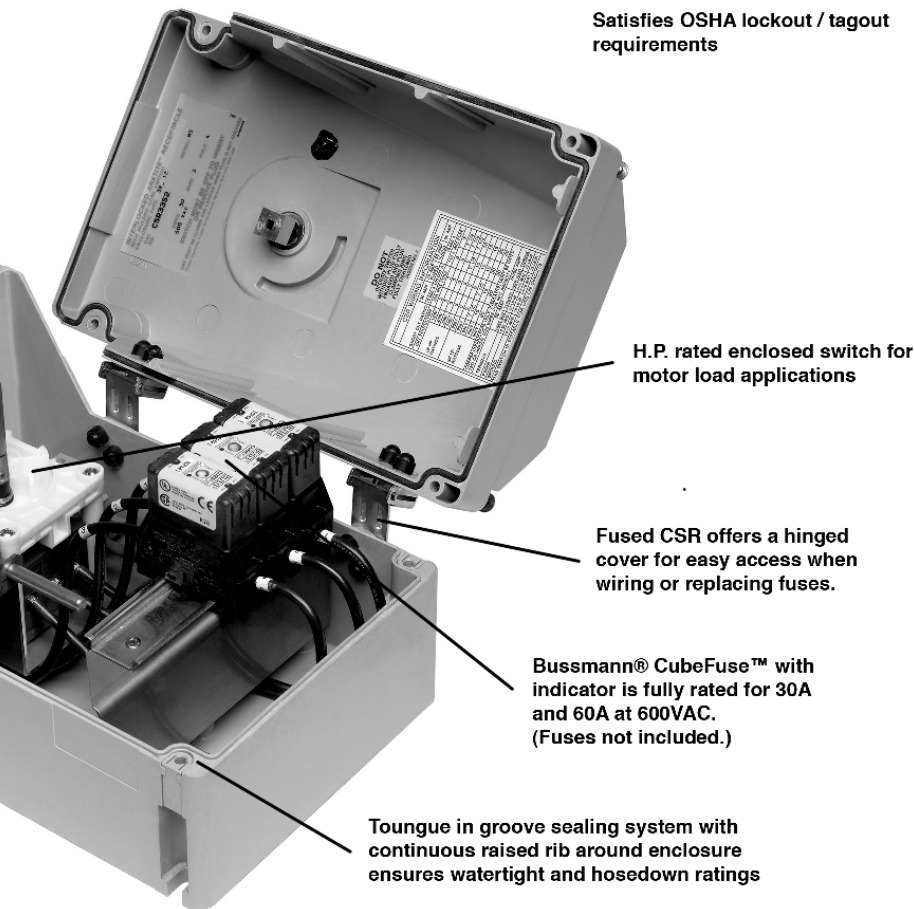
Arktite® CSR Series Nonmetallic Interlocked Receptacles

Fused and Non-Fused

30, 60 and 100 Amp
Enclosure Type 3,4,4X,12
IP66
UL and cUL Listed

Watertight
Corrosion-Resistant

3P



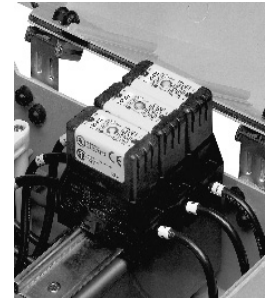
Satisfies OSHA lockout / tagout requirements

H.P. rated enclosed switch for motor load applications

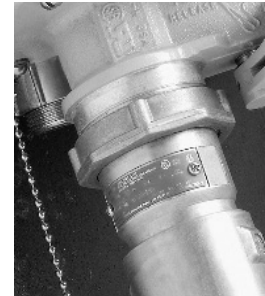
Fused CSR offers a hinged cover for easy access when wiring or replacing fuses.

Bussmann® CubeFuse™ with indicator is fully rated for 30A and 60A at 600VAC. (Fuses not included.)

Tongue in groove sealing system with continuous raised rib around enclosure ensures watertight and hosedown ratings



Fully rated for 30A and 60A at 600 VAC. For use with Bussmann CubeFuse. Fuses not included.



Plug locks into receptacle, providing positive, worry-free power engagement as well as watertight protection



Complies with OSHA lockout/tagout requirements

CERTIFICATIONS AND COMPLIANCES

- UL Listed – (UL Standards 508, 1682)
- cUL Listed (Certified by UL to CSA Standards C22.2 Nos. 14, 182.1)
- Enclosure Type 3, 4, 4X, 12
- IP66 Enclosure

STANDARD MATERIALS

- Enclosure - fiber reinforced polyester
- Hardware - stainless steel
- Receptacle Housing - aluminum
- Power Contacts - naval brass
- Interlock Mechanism - stainless steel

STANDARD FINISHES

- Aluminum - Corro-free™ epoxy powder
- Brass - natural
- Stainless Steel - natural

OPTIONS

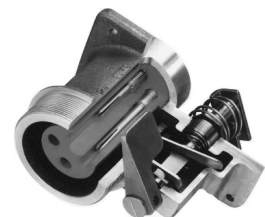
Description

- Factory Installed Auxiliary Contacts S483
- Rotated Interior (22 ½ degrees to right) S4

Suffix to be added to Cat. #

HORSEPOWER RATINGS

	250 VAC	480 VAC	600 VAC
30 A	10 HP	20 HP	25 HP
60 A	20 HP	40 HP	40 HP



Heavy-duty, epoxy coated cast aluminum receptacle with stainless steel interlocking mechanism for superior durability and corrosion resistance.

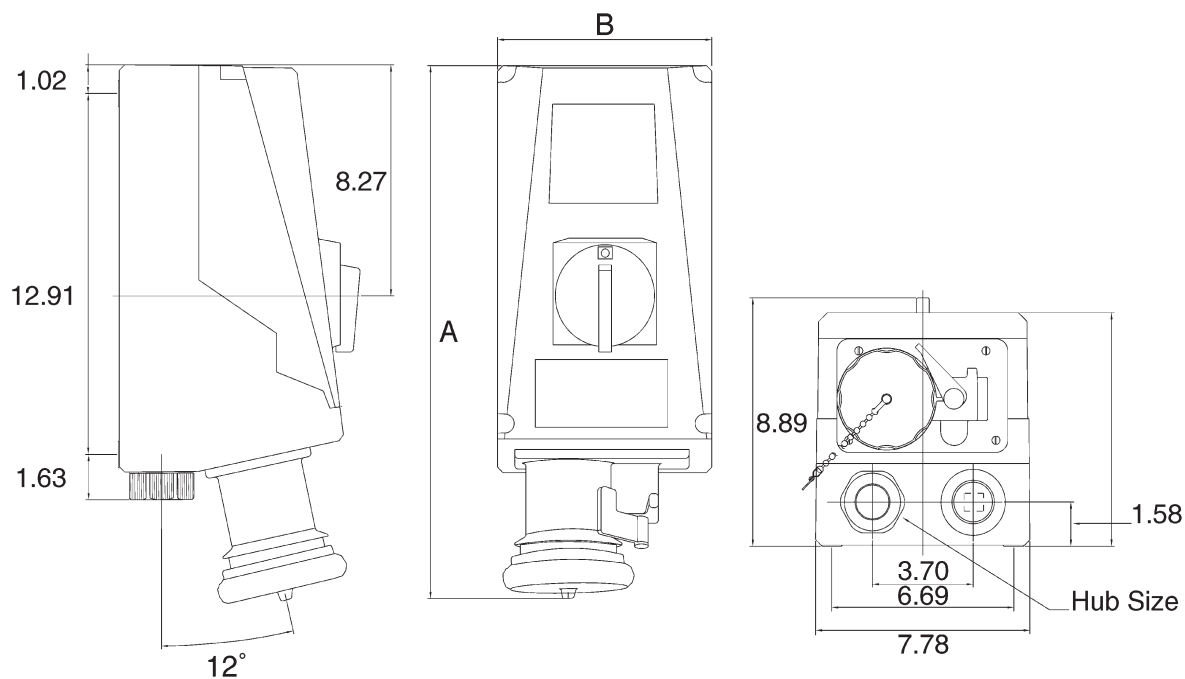
3P

Arktite® CSR Series Nonmetallic Interlocked Receptacles

Fused and Non-Fused

30, 60 and 100 Amp
Enclosure Type 3,4,4X,12
IP66
UL and cUL Listed

Watertight
Corrosion-Resistant



Amps	Style	Dimension A	Dimension B	Hub Size
30	Fused	18.26	8.00	1"
30	Non-Fused	18.26	7.87	1"
60	Fused	19.26	8.00	1 1/4"
60	Non-Fused	19.26	7.87	1 1/4"

Arktite Welder Series

Interlocked Power Modules

UL/cUL Listed

3P



Cooper Crouse-Hinds Interlocked Power Modules are ideal for the harsh, heavy duty environments of welding applications. The Welder Series Power Module is a unique patented design that employs a mechanical interlock linkage system that interfaces with the power receptacle and the built in circuit breaker. It is ideal for protecting the safety of your personnel and your valuable welding equipment.

APPLICATIONS

- Ship building yards
- Ports
- Offshore platform fabrication yards
- Test stations at remote sites
- Military heavy equipment manufacturing

FEATURES & BENEFITS

- Mechanically interlocked to prevent insertion or withdrawal of plug under load
- Circuit breaker protected
- Stainless steel and die cast construction provides durability and corrosion resistance
- Flanged design for easy panel mounting and flexibility of Power Stand design
- Arktite® receptacle accepts existing Cooper Crouse-Hinds Arktite die cast and Krydon® plugs of the same rating and configuration

CERTIFICATIONS & COMPLIANCES

- UL/cUL Listed Module
- UL 498 Listed
- CSA Certified Molded Case Circuit Breaker

STANDARD MATERIALS & FINISHES

- Frame, On/Off Rod, Interlock Mechanism, Fasteners - Stainless steel
- Receptacle Housing - Die cast aluminum or Krydon
- Power Contacts - Naval brass
- Receptacle Insulator - Krydon



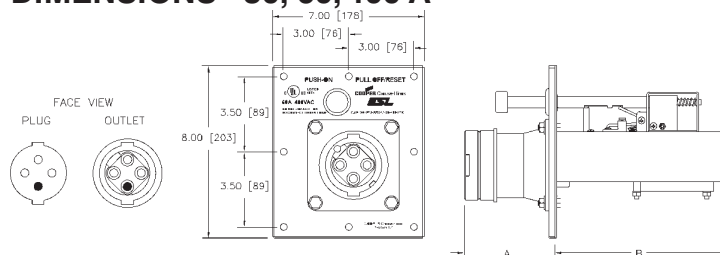
ORDERING INFORMATION

3 Wire 4 Pole 480 VAC 22K AIC Rating*

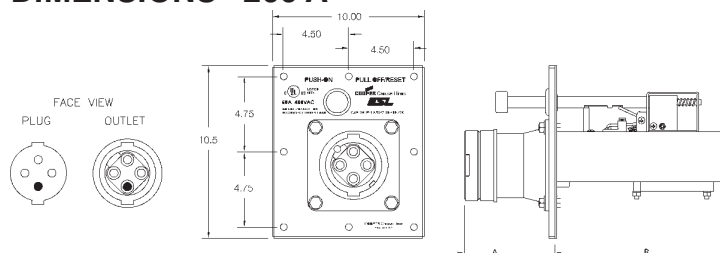
Amps	Receptacle	Catalog Number	Dimension	
			A	B
30	Die cast	M4IPM AR342 3048022K	2.8	8.00
30 (configured)	Die cast	M4IPM ARC34P 3048022K	2.8	8.00
30	Krydon	M4IPM NR342 3048022K	3.1	8.00
60	Die cast	M4IPM AR642 6048022K	4.3	8.00
60 (configured)	Die cast	M4IPM ARC64P 6048022K	4.3	8.00
60	Krydon	M4IPM NR642 6048022K	4.5	8.00
100	Die cast	M4IPM AR1042 10048022K	5.3	8.00
100 (configured)	Die cast	M4IPM ARC104P 10048022K	5.3	8.00
100	Krydon	M4IPM NR1042 10048022K	5.6	8.00
200	Die cast	M4IPM AR2042 20048022K	7.3	10.0

65K AIC rating available, substitute 65K for 22K in catalog number

DIMENSIONS - 30, 60, 100 A



DIMENSIONS - 200 A



For Panel and Cabinet Mounting

Application:

SRG dead front interlocked receptacles and switches and SP plugs are used:

- to supply power to portable electrical equipment such as motor-generator sets, compressors, heating and cooling units, conveyors, and similar equipment
- in areas where dust, dirt, moisture and corrosion are a problem
- mounted on sheet metal panels or cabinets and installed indoors or outdoors in non-hazardous areas of chemical plants, process industry facilities, manufacturing plants, and similar industrial locations

Features:

- The receptacle assembly contains a built-in rotary switch which is automatically operated when the plug is inserted and withdrawn. The switch, capable of making and breaking the circuit at full rated load, is operated by a helical blade in the center of the plug
- Plug and receptacle contacts cannot be made or broken under load. When the plug is inserted, the plug and receptacle contacts engage before the switch closes. When the plug is withdrawn, the switch opens before the plug and receptacle contacts disengage. This sequence of operation provides a dead front receptacle with the maximum of safety
- Operation is simple, safe and fast. In the event of difficulty with the portable device, it can be quickly and completely disconnected by a straight pull on the plug, since there are no separate interlock devices or operating handles to actuate
- There is a distinct physical polarization of plug and receptacle in every rating, thereby assuring positive engagement without mismatching
- Receptacles are furnished with flexible leads for splicing to the circuit wires
- Although intended primarily for mounting on sheet metal panels or cabinets, a back box for conduit connection is listed for the 30 and 60 ampere units

Grounding:

- Both receptacles and plugs are provided with an extra grounding pole. In plugs, provision is made for attachment of the grounding wire to the grounding pole. In addition, direct connection is also provided between plug and receptacle housings and the grounding pole.

Standard Materials:

- Receptacle housings and plug exteriors – copper-free aluminum
- Insulation – high impact glass filled phenolic
- Contacts – brass

Standard Finishes:

- Copper-free aluminum – natural
- Phenolic – natural (black)
- Brass – silver plated

Options:

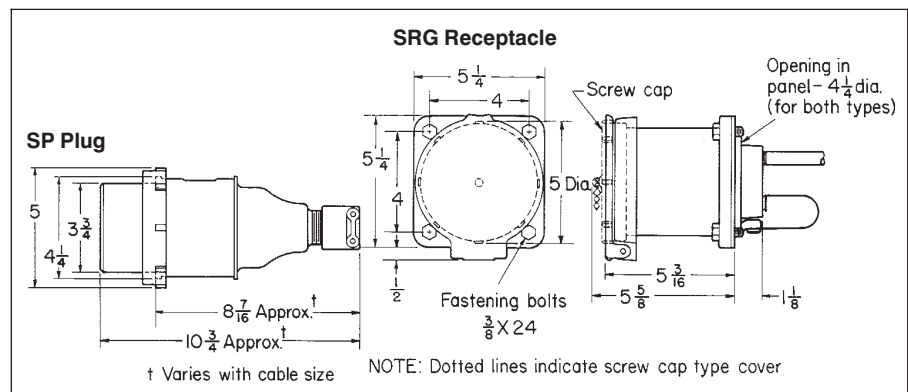
- **Special polarity** – where two or more receptacles of the same ampere rating and number of poles are to be installed in the same area for use on different voltages, alternate polarizations can be furnished. Detailed information on request.

Electrical Rating Ranges:

- 30, 60 and 100 amperes, 480 vac



Dimensions



SRG Dead Front Interlocked Receptacles and Switches SP Plugs

For Panel and Cabinet Mounting

30/60/100A
480VAC
50**-400 hertz
Weather Resistant

3P



Rating	Description	Receptacle with Spring Door	Plug with Cable Grip and Neoprene Bushing		Receptacle with Threaded Cap	Plug with Fastening Ring Cable Grip and Neoprene Bushing	
		Cat. #	Cable Dia.	Cat. #	Cat. #	Cable Dia.	Cat. #
30 amp.	2-wire, 3-pole	SRG332N	.500 to .875	SP3363N	SRG338N	.500 to .875	SP3383N
			.875 to 1.375	SP3365N		.875 to 1.375	SP3385N
	3-wire, 4-pole	SRG342D	.500 to .875	SP3463D	SRG348D	.500 to .875	SP3483D
			.875 to 1.375	SP3465D		.875 to 1.375	SP3485D
	4-wire, 5-pole	SRG352-NW	.500 to .875	SP3563-NW	SRG358-NW	.500 to .875	SP3583-NW
60 amp.			.875 to 1.375	SP3565-NW		.875 to 1.375	SP3585-NW
	2-wire, 3-pole	SRG632N	.500 to .875	SP6363N	SRG638N	.500 to .875	SP6383N
			.875 to 1.375	SP6365N		.875 to 1.375	SP6385N
	3-wire, 4-pole	SRG642D	.500 to .875	SP6463D	SRG648D	.500 to .875	SP6483D
			.875 to 1.375	SP6465D		.875 to 1.375	SP6485D
100 amp.	4-wire, 5-pole	SRG652-NW	.875 to 1.375	SP6565-NW	SRG658-NW	.875 to 1.375	SP6585-NW
			1.375 to 1.875	SP6567-NW		1.375 to 1.875	SP6587-NW
	2-wire, 3-pole	SRG1032N	.875 to 1.375	SP10365N	SRG1038N	.875 to 1.375	SP10385N
			1.375 to 1.875	SP10367N		1.375 to 1.875	SP10387N
	3-wire, 4-pole	SRG1042D	.875 to 1.375	SP10465D	SRG1048D	.875 to 1.375	SP10485D
			1.375 to 1.875	SP10467D		1.375 to 1.875	SP10487D
	4-wire, 5-pole	SRG1052-NW	.875 to 1.375	SP10565-NW	SRG1058-NW	.875 to 1.375	SP10585-NW
			1.375 to 1.875	SP10567-NW		1.375 to 1.875	SP10587-NW

** For use on systems less than 60 hertz the receptacles, plugs and connectors are for disconnect use only.

Back Box For 30 and 60 amp. SRG receptacles

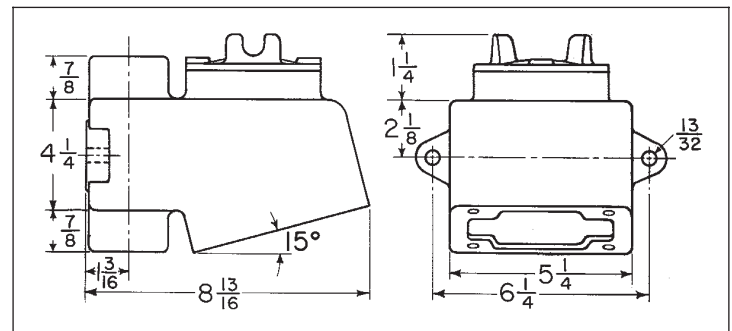
Furnished with vertical through feed hubs, 1 1/4" size, and threaded cover at top for wiring access.

Cat. #
CESD42



Back box
For 30 and 60 Amp
SRG Receptacles.

Dimensions



DBR Interlocked Arktite® Receptacles With Enclosed Circuit Breakers

APJ/NPJ Arktite Plugs ♦ ♦

Cl. II, Div 1 and 2, Groups F,G
Cl. III
NEMA/EFC 3,9FG,12
Dust-Ignitionproof
Raintight

Application:

DBR interlocked *Arktite* receptacles with enclosed circuit breakers and APJ/NPJ *Arktite* plugs are used:

- to supply power to portable electrical equipment such as motor-generator sets, compressors, heating and cooling units, conveyors, and similar equipment
- in locations where hazardous dusts are present, as in grain processing and handling plants, chemical plants and certain food processing industries
- indoors or outdoors in damp, wet or corrosive locations

Features:

- Receptacles are mechanically interlocked with circuit breakers to provide disconnect means, short circuit protection and thermal time delay overload protection.
- Enclosures are compact and rectangular in shape permitting close spacing.
- For maximum safety, the spring door receptacle at the bottom is mechanically interlocked with the circuit breaker operating mechanism. The circuit breaker cannot be closed until the plug is fully inserted and the plug cannot be withdrawn unless the breaker is open.
- Operating handles can be padlocked in either "ON" or "OFF" positions. Breakers are trip-free of the handles and will open under short circuit or overload even if the handle is locked in the "ON" position.
- Enclosure is provided with a drilled and tapped conduit opening at top center, equipped with a threaded-in bushing. The size furnished is 1½", and removing the bushing permits the use of a 2" conduit.

Interchangeability of Plugs with Other Hazardous and Non-Hazardous Location Receptacles:

- Plugs listed for use with DBR assemblies are standard *Arktite* APJ/NPJ plugs. Other standard APJ/NPJ and CPH plugs of the same rating, style and number of poles may be used with DBR receptacles, as well as with DR receptacles listed in Section 2P and with EBBR, EPC and EPCB receptacles listed in Section 4P.
- As a result, portable equipment suitable for the locations and equipped with the proper plug can be used with AR receptacles for non-hazardous locations, with EBBR, EPC and EPCB receptacles for Class I hazardous locations, and with DR and DBR interlocked receptacles for Class II hazardous locations.

Standard Materials:

- Bodies, covers and operating handles – copper-free aluminum
- Operating shafts – stainless steel
- Receptacle housings and plug exteriors – copper-free aluminum
- Insulation: plugs and receptacles – fiberglass-reinforced polyester
- Pressure contacts – brass
- Crimp/solder contacts – leaded red brass

Standard Finishes:

- Copper-free aluminum – plug exterior, enclosure and receptacle housing – natural
- Stainless steel – natural
- Brass – natural
- Fiberglass-reinforced polyester – natural (red)
- Leaded red brass – electro-tin-plate

Options:

The following special options are available by adding suffix to Cat. No.

**Suffix to be
Added to
Cat. #**

Description

Special polarity – for use where two or more receptacles of the same ampere rating, style and number of poles are to be installed in the same area for use on different voltages.

Available as follows:

- Receptacle interior rotated 22½ degrees clockwise when viewed from receptacle face and plug changed to match S4
 - Breather (drain furnished as standard) S219
- Conduit arrangements other than standard can be supplied. Details on request

Certifications and Compliances:

- NEC: Class II, Division 1 and 2, Groups F,G Class III
- NEMA/EFC: 3,9FG,12
- UL Standard: 698, 1010
- CEC: Class II, Division 1 and 2, Group G Class III
- Encl.: 3,5

Electrical Rating Ranges:

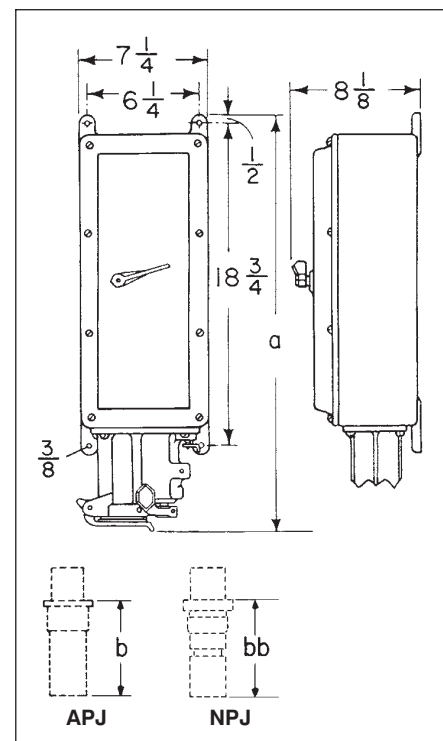
- Receptacle ratings: 30, 60 and 100 amperes
- Circuit breakers – 100 ampere frame size

Amps	a	b	bb
30	21¾	41¾	7
60	22¾	51¾	61¾
100	23½	6¾	7¾

Dim. "b" and "bb" are exposed portion of plug when engaged with receptacle.



Dimensions



DBR Interlocked Arktite® Receptacles With Enclosed Circuit Breakers

Cl. II, Div 1 and 2, Groups F,G
Cl. III
NEMA/IEC 3,9FG,12
Dust-Ignitionproof
Raintight

3P

100 Ampere Frame Size with Non-Interchangeable Thermal Trip and Non-Adjustable Magnetic Trip

Receptacle With Spring Door Housing†	Circuit Breaker Rating	Enclosure		Without Circuit Breaker Cat. #	With Circuit Breaker Cat. # Westinghouse "FDB"
		Hub Size	Ckt. Bkr. Amps		
30 amp., 3-wire, 3-pole, Style 1	3-pole 600VAC	1½	20	DBR53731	DBR53731-WT20-3
			30		DBR53731-WT30-3
			40		DBR53731-WT40-3*
			50		DBR53731-WT50-3*
30 amp., 2-wire, 3-pole, Style 2	2-pole 600VAC or 250VDC	1½	20	DBR53732	DBR53732-WT20-2
			30		DBR53732-WT30-2
			40		DBR53732-WT40-2*
			50		DBR53732-WT50-2*
30 amp., 3-wire, 4-pole, Style 2	3-pole 600VAC	1½	20	DBR53742	DBR53742-WT20-3
			30		DBR53742-WT30-3
			40		DBR53742-WT40-3*
			50		DBR53742-WT50-3*
60 amp., 3-wire, 3-pole, Style 1	3-pole 600VAC	1½	50	DBR56731	DBR56731-WT50-3
			60		DBR56731-WT60-3
			70		DBR56731-WT70-3*
			90		DBR56731-WT90-3*
60 amp., 2-wire, 3-pole, Style 2	2-pole 600VAC or 250VDC	1½	100	DBR56732	DBR56731-WT100-3*
			50		DBR56732-WT50-2
			60		DBR56732-WT60-2
			70		DBR56732-WT70-2*
60 amp., 3-wire, 4-pole, Style 2	3-pole 600VAC	1½	90	DBR56742	DBR56732-WT90-2*
			100		DBR56732-WT100-2*
			50		DBR56742-WT50-3
			60		DBR56742-WT60-3
100 amp., 3-wire, 3-pole, Style 1	3-pole 600VAC	1½	70	DBR51731	DBR56742-WT70-3*
			90		DBR56742-WT90-3*
			100		DBR56742-WT100-3*
			60		DBR51731-WT60-3
100 amp., 2-wire, 3-pole, Style 2	2-pole 600VAC or 250VDC	1½	70	DBR51732	DBR51731-WT70-3
			90		DBR51731-WT90-3
			100		DBR51731-WT100-3
			60		DBR51732-WT60-2
100 amp., 3-wire, 4-pole, Style 2	3-pole 600VAC	1½	70	DBR51742	DBR51732-WT70-2
			90		DBR51732-WT90-2
			100		DBR51732-WT100-2
			60		DBR51742-WT60-3
			70		DBR51742-WT70-3
			90		DBR51742-WT90-3
			100		DBR51742-WT100-3

* Circuit breaker trip rating may exceed receptacle rating for welding equipment applications only, as higher trip rating may not protect wiring.

◆ ◆ Pressure connectors are standard. Crimp/solder type terminators are optionally available for 3 and 4-pole 30, 60 and 100 ampere. For details, see table on page 969. To specify, add the suffix "T" to the catalog number. For example: APJ3375-T (Plug)

† Style 1 – Grounded through shell. Style 2 – Grounded through extra pole and shell. For a detailed description of these grounding methods, see page 967.

‡ For circuit breaker Cat. No. refer to Section 6C, Table 9, List FDB. For detailed information on circuit breaker selection, see Section 6C.

APJ/NPJ Arktite Plugs ◆ ◆ 600VAC/250VDC with Cable Grip and Neoprene Bushing



APJ Plug



NPJ Plug

Amps	Cable O.D. Range	Style 1†	Style 2†
		3-wire, 3-pole Cat. #	2-wire, 3-pole Cat. #
30	0.60 to 1.20	APJ3375	APJ3385
	0.55 to 0.70		NPJ3383
	0.70 to 0.85		NPJ3384
60	0.75 to 1.45	APJ6375	APJ6385
	0.75 to 1.07		NPJ6384
	1.07 to 1.35		NPJ6385
100	1.00 to 1.70	APJ10377	APJ10387
	0.93 to 1.21		NPJ10386
	1.21 to 1.50		NPJ10387
			3-wire, 4-pole Cat. #
			APJ3485
			NPJ3483
			NPJ3484
			APJ6485
			NPJ6484
			NPJ6485
			APJ10487
			NPJ10486
			NPJ10487

3P
Interlocked
Plugs and
Receptacles

NSR Arktite® Interlocked Receptacles With Enclosed Disconnect Switches

APJ/NPJ Arktite Plugs

NEMA 3,3R,4*,4X*,12
Watertight
Corrosion-Resistant

Application:

NSR *Arktite* interlocked receptacles with enclosed disconnect switches are used:

- to provide a power disconnect for fixed or portable electrical equipment such as welders, generators and compressors where the switch will be subject to frequent operation
- to provide short circuit protection when a fusible switch is needed
- in non-hazardous indoor or outdoor areas where corrosion, dust, hosedown and moisture may be a problem such as in offshore and marine locations, pulp and paper mills, chemical plants, sewage treatment plants and food processing facilities

Features:

- Enclosures are made of *Krydon*® high-impact strength fiberglass-reinforced polyester material having excellent resistance to corrosion and heat
- Switches are NEMA type HD heavy duty 3-pole, enclosed blade; a quick make-and-break mechanism with reinforced, positive pressure type blade and jaw construction. Fusible switches have fuse clips with steel reinforcing springs
- For maximum safety, the spring door receptacle at the bottom is mechanically interlocked with the switch operating mechanism. The switch cannot be closed until the plug is fully inserted and the plug cannot be withdrawn unless the switch is open
- Switch enclosure access door is mechanically interlocked with switch and cannot be opened unless switch operator is in "OFF" position
- Enclosure has hinged access door for easy wiring and maintenance. Three screws, located behind access door in door frame, prevent disassembly when door is locked
- A *Krydon* material hub (not mounted) is supplied with each enclosure as follows:

Rating	Hub Size	Cat. No.
30A	¾	NHUB2
60A	1¼	NHUB4
100A	2	NHUB6

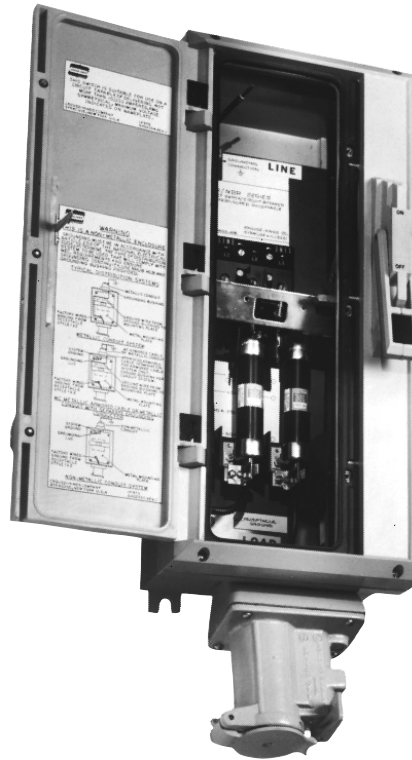
For alternate hub sizes, refer to catalog page 658.

- Receptacle has self-closing spring door assembly to provide environmental protection
- Mounting feet may be rotated 90° to horizontal or vertical mounting positions
- Switch operating handle may be padlocked in the "OFF" position, preventing unauthorized operation of the switch

Interchangeability of Plugs With Other Non-Hazardous and Hazardous Location Receptacles:

- Plugs listed for use with NSR assemblies are standard *Arktite* APJ/NPJ plugs. Other

*30 & 60A style 2 only



standard APJ/NPJ and CPH plugs of the same rating, style and number of poles may be used with NSR receptacles, as well as with DR receptacles listed in Section 2P, and with EBBR, EPC and EPCB receptacles listed in Section 4P

- Portable equipment, suitable for the locations and equipped with the proper plug, can be used with non-hazardous rated AR receptacles, DBR and WSR interlocked receptacles located in non-hazardous locations, with EBBR, EPC and EPCB receptacles for Class I, Groups B, C, D hazardous locations, with DR and DBR interlocked receptacles for Class II, Groups F, G hazardous locations, and with NBR/NSR interlocked receptacles for wet and corrosive locations

Standard Materials:

- Receptacle housings – copper-free aluminum
- Insulators (plug and receptacle) – *Krydon* material
- Crimp/solder contacts – leaded red brass
- Enclosure and operating handle – *Krydon* fiberglass-reinforced polyester material
- Other exterior parts – stainless steel

Standard Finishes:

- Copper-free aluminum – baked-on powder epoxy
- Stainless steel – natural
- Leaded red brass – electro-tin-plated
- Enclosure – natural (gray)
- Insulator (plug and receptacle) – natural (red)

Options:

- Special polarity – for use where two or more receptacles for the same ampere rating, style and number of poles are to be installed in the same area for use on different voltages. Receptacle interior rotated 22½ degrees to right (viewed from face) and matching plug – add suffix S4 to Cat. No.
- Hubs for other conduit sizes can be supplied. See listing on page 655.

Certifications and Compliances:

- NEMA 3, 3R, 4*, 4X*, 12
- ANSI/UL standard 489
- UL standard 1682
- CSA

NSR Arktime® Interlocked Receptacles with Enclosed Disconnect Switches

APJ/NPJ Arktime Plugs♦♦

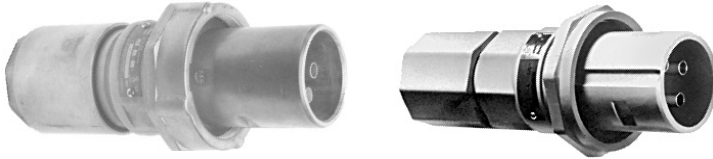
240 and 600 VAC
250 VDC
NEMA 3,3R,4,4X,12
Watertight
Corrosion-Resistant

3P

		240VAC/250VDC				600VAC/250VDC			
Amps	Conduit Opening Size§	Style 1†	Style 2†	AC HP Rating	DC HP Rating	Style 1†	Style 2†	AC HP Rating	DC HP Rating
		3-wire, 3-pole Cat. #	3-wire, 4-pole Cat. #			3-wire, 3-pole Cat. #	3-wire, 4-pole Cat. #		
FUSIBLE									
30	¾	NSR331**	NSR332**	3	5	NSR3351*	NSR3352*	7½	5
60	1¼	NSR631**	NSR632**	5	10	NSR6351*	NSR6352*	20	10
100	2	NSR1031**	NSR1032**	10	20	NSR10351*	NSR10352*	30	20
NON-FUSIBLE									
30	¾	NSR3341	NSR3342	7½	5	NSR33541	NSR33542	20	5
60	1¼	NSR6341	NSR6342	20	10	NSR63541	NSR63542	50	10
100	2	NSR10341	NSR10342	30	20	NSR103541	NSR103542	75	20

APJ/NPJ PLUGS

600VAC/250VDC, with Cable Grip and Neoprene Bushing



Amps	Cable O.D. Range	Style 1† 3-wire, 3-pole Cat. #	Style 2† 3-wire, 4-pole Cat. #
30	0.60 to 1.20	APJ3375	APJ3485
	0.55 to 0.70		NPJ3483
	0.70 to 0.85		NPJ3484
60	0.75 to 1.45	APJ6375	APJ6485
	0.75 to 1.07		NPJ6484
	1.07 to 1.35		NPJ6485
100	1.00 to 1.70	APJ10377	APJ10487
	0.93 to 1.21		NPJ10486
	1.21 to 1.50		NPJ10487

* Arranged for NEC Class H fuses. May be field converted to NEC Class J fuses.

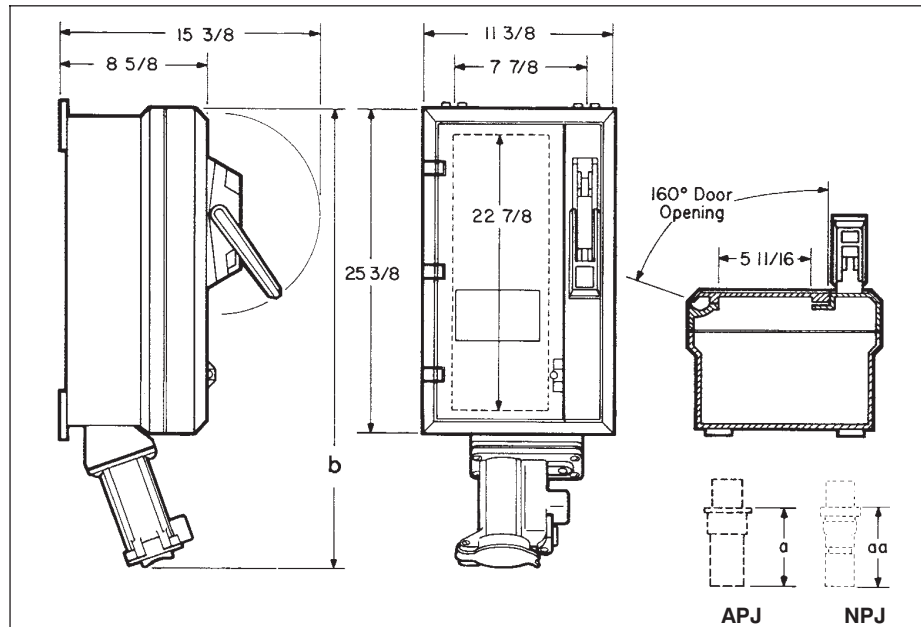
** Fuse clips accommodate NEC Class H fuses. For NEC Class J fuses, use 600V switches.

♦♦ Pressure connectors are supplied as standard. To specify crimp/solder type terminators add the suffix "T" to the catalog number. For example: APJ3375-T (Plug)

† Style 1 – Grounded through shell. Style 2 – Grounded through extra pole and shell. For a detailed description of these grounding methods, see page 967.

§ For alternate hub sizes, refer to catalog page 658.

Dimensions



Amps	b	a	aa
30	31⅜	4⅜	7
60	33	5⅜	6⅜
100	33¾	6⅝	7¾

Dim. "a" and "aa" are exposed portion of plug when engaged with receptacle.

NBR Arktite® Interlocked Receptacles with Enclosed Circuit Breakers

APJ/NPJ Arktite Plugs

NEMA 3, 3R, 4*, 4X*, 12
Watertight
Corrosion-Resistant

Application:

NBR *Arktite* interlocked receptacles with enclosed circuit breakers are used:

- to supply power and provide short circuit protection, thermal overload protection, and a disconnect means for portable electrical equipment such as motor generator sets, compressors, conveyors, and other similar equipment
- in locations where corrosion is present such as in offshore and marine locations, pulp and paper mills, chemical plants, food processing, and sewage treatment plants
- indoors and outdoors in damp, wet or hosedown locations

Features:

- Enclosures are made of *Krydon*® high-impact strength fiberglass-reinforced polyester material having excellent resistance to corrosion and heat
- Receptacles are mechanically interlocked with circuit breakers which provide a disconnect means, short circuit protection, and thermal time delay overload protection
- For maximum safety, the spring door receptacle at the bottom is mechanically interlocked with the circuit breaker operating mechanism. The circuit breaker cannot be closed until the plug is fully inserted and the plug cannot be withdrawn unless the breaker is open
- Enclosure has hinged access door for easy wiring and maintenance. Three screws, hidden behind access door in door frame, prevent disassembly when door is locked
- Enclosure access door is mechanically interlocked with operating handle and cannot be opened unless operating handle operator is in "OFF" position
- A *Krydon* material hub (not mounted) is supplied with each enclosure as follows:

Rating	Hub Size	Cat. #
30A	¾	NHUB2
60A	1¼	NHUB4
100A	2	NHUB6

For alternate hub sizes, refer to catalog page 658.

- Receptacle has self-closing spring door assembly to provide environmental protection
- Operating handle can be padlocked in "OFF" position. Breaker is trip-free of handle and will open under short circuit or overload when handle is in the "ON" position
- Provided with top and bottom mounting feet which may be rotated 90° to vertical or horizontal mounting positions

*30 & 60A style 2 only

Interchangeability of Plugs With Other Non-Hazardous And Hazardous Location Receptacles:

- Plugs listed for use with NBR assemblies are standard *Arktite* APJ/NPJ plugs. Other standard APJ/NPJ and CPH plugs of the same rating, style and number of poles may be used with NBR receptacles, as well as with DR receptacles listed in Section 2P, and with EBBR, EPC and EPCB receptacles listed in Section 4P
- Portable equipment, suitable for the locations and equipped with the proper plug, can be used with non-hazardous rated AR receptacles, DBR and WSR interlocked receptacles located in non-hazardous locations, with EBBR, EPC and EPCB receptacles for Class I, Groups B, C, D hazardous locations, with DR and DBR interlocked receptacles for Class II, Groups F, G hazardous locations, and with NBR/NSR interlocked receptacles for wet and corrosive locations

Standard Materials:

- Enclosure, covers and operating handles – *Krydon* fiberglass reinforced polyester material
- Operating shafts – stainless steel
- Receptacle housings – copper-free aluminum
- Receptacle insulators – *Krydon* material
- Crimp/solder contacts – leaded red brass

Standard Finishes:

- Copper-free aluminum – baked on powder epoxy
- Stainless steel – natural
- Enclosure – natural
- Receptacle insulators – natural (red)
- Brass – natural
- Leaded red brass – electro-tin-plated

Certifications and Complies:

- NEMA 3, 3R, 4*, 4X*, 12
- ANSI/UL Standard 489
- UL Standard 1682
- CSA

Electrical Rating Ranges:

- Receptacles – 30, 60 and 100 amperes
- Circuit Breakers – 100 ampere frame size

NOTE: For additional dimensional data, see page 655, enclosure catalog number NCB1024.



Options:

- Special polarity – for use where two or more receptacles of the same ampere rating, style and number of poles are to be installed on the same premises for use of different voltages. Receptacle interior rotated 22½ degrees to right (viewed from face) and plug changed to match – add suffix S4 to Cat. No.
- Hubs for other conduit sizes can be supplied. See listing on page 658.

NBR Arktite® Interlocked Receptacles with Enclosed Circuit Breakers

APJ/NPJ Arktite Plugs♦♦

3-Pole, 600 VAC

NEMA 3,3R,4,4X,12
Watertight
Corrosion-Resistant

3P

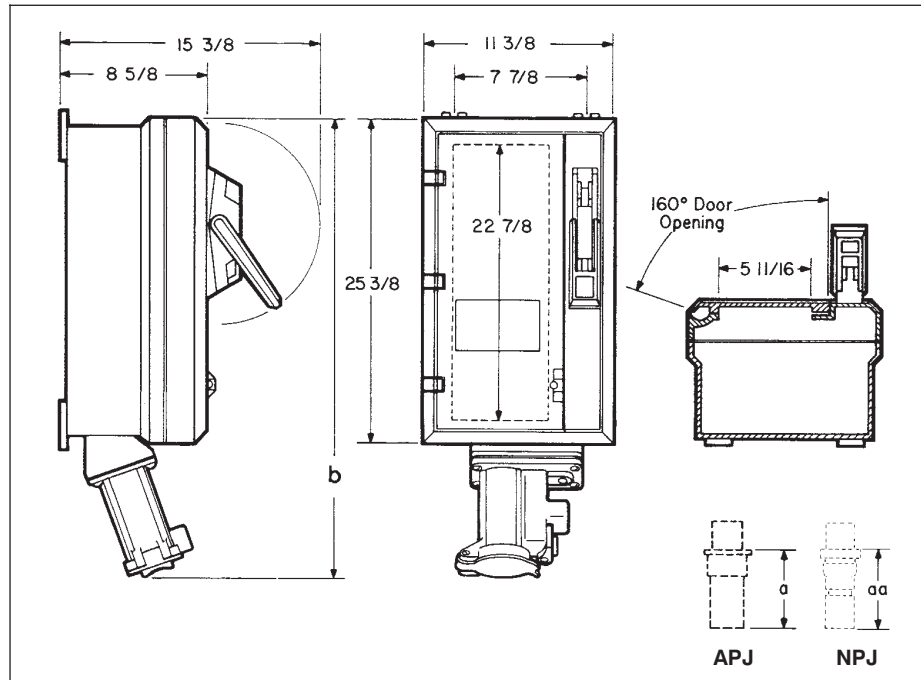
100 Ampere Frame Size with Non-Interchangeable Trip‡§

Receptacle With Spring Door Housing	Enclosure		Without Circuit Breaker Cat. #	With Cutler-Hammer Circuit Breaker Cat. #
	Hub Size	Ckt. Brkr. Amps		
STYLE 1†				
30 amp., 3-wire, 3-pole	¾	20	NBR53731	NBR53731-WT20-3
		30		NBR53731-WT30-3
		40		NBR53731-WT40-3*
		50		NBR53731-WT50-3*
60 amp., 3-wire, 3-pole	1¼	50	NBR56731	NBR56731-WT50-3
		60		NBR56731-WT60-3
		70		NBR56731-WT70-3*
		90		NBR56731-WT90-3*
		100		NBR56731-WT100-3*
100 amp., 3-wire, 3-pole	2	60	NBR51731	NBR51731-WT60-3
		70		NBR51731-WT70-3
		90		NBR51731-WT90-3
		100		NBR51731-WT100-3

STYLE 2†

30 amp., 3-wire, 4-pole	¾	20	NBR53742	NBR53742-WT20-3
		30		NBR53742-WT30-3
		40		NBR53742-WT40-3*
		50		NBR53742-WT50-3*
60-amp., 3-wire, 4-pole	1¼	50	NBR56742	NBR56742-WT50-3
		60		NBR56742-WT60-3
		70		NBR56742-WT70-3*
		90		NBR56742-WT90-3*
100 amp., 3-wire, 4-pole	2	100	NBR51742	NBR56742-WT100-3*
		60		NBR51742-WT60-3
		70		NBR51742-WT70-3
		90		NBR51742-WT90-3
		100		NBR51742-WT100-3

Dimensions



APJ/NPJ Plugs 600 VAC With Cable Grip and Neoprene Bushing



APJ



NPJ

Amps	Cable O.D. Range	Style 1† 3-wire, 3-pole Cat. #	Style 2† 3-wire, 4-pole Cat. #
30	0.60 to 1.20	APJ3375	APJ3485
	0.55 to 0.70		NPJ3483
	0.70 to 0.85		NPJ3484
60	0.75 to 1.45	APJ6375	APJ6485
	0.75 to 1.07		NPJ6484
	1.07 to 1.35		NPJ6485
100	1.00 to 1.70	APJ10377	APJ10487
	0.93 to 1.21		NPJ10486
	1.21 to 1.50		NPJ10487

Dim. "a" and "aa" are exposed portion of plug when engaged with receptacle.

* Circuit breaker trip rating may exceed receptacle rating for welding equipment applications only, as higher trip rating may not protect wiring.

♦ ♦ Pressure connectors are standard. Crimp solder type terminators are optionally available for 3 and 4-pole 30, 60 and 100 ampere. For details, see table on page 969. To specify, add the suffix "T" to the catalog number. For example: APJ3375-T (Plug).

§ Also available with interchangeable trip breakers. Specify on order.

† Style 1 – Grounded through shell. Style 2 – Grounded through extra pole and shell. For a detailed description of these grounding methods, see page 967.

‡ For circuit breaker Cat. No. refer to Section 6C, Table 9, List FDB. For detailed information on circuit breaker selection, see Section 6C.

3P
Interlocked
Plugs and
Receptacles

Application:

- The DSR disconnect switches are used as a service outlet for portable or fixed electrical equipment – generators, compressors, welders, etc.
- They are designed for use in hazardous and non-hazardous areas where dust, moisture and corrosion may be a problem.
- Designed for surface mounting.
- A fusible type switch, when used, also provides short circuit protection.

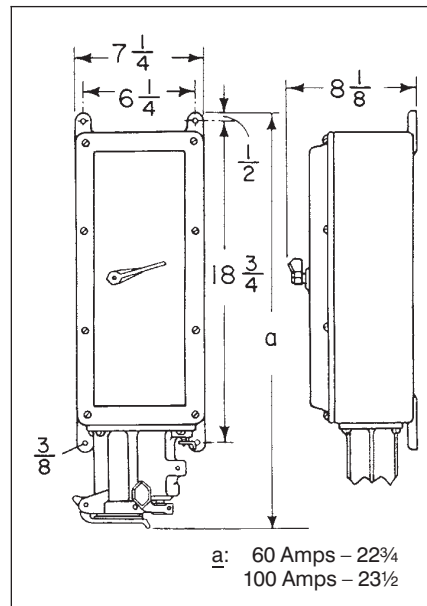
Features:

- Switches
- Type DS disconnect is a compact load break switch using the De-ion arc quenching principle and quick make-quick break over center toggle mechanism. It has visible contacts, is CSA listed up to 75 hp., and is available either as a fusible or non-fusible switch.
- Enclosures are compact and rectangular in shape permitting close spacing with a gasketing cover.
- For maximum safety, the spring door receptacle at the bottom is mechanically interlocked with the switch operating mechanism. The switch cannot be closed until the plug is fully inserted and the plug cannot be withdrawn unless the switch is open.
- Operating handles can be padlocked in either "ON" or "OFF" positions.
- Enclosure is provided with a drilled and tapped conduit opening at top center, equipped with a thread-in bushing. The size furnished is 1½", and removing the bushing permits the use of a 2" conduit.

Standard Materials:

- Bodies, covers and operating handles – copper-free aluminum.
- Operating shafts – stainless steel.
- Receptacle housings and plug exteriors – copper-free aluminum.
- Insulation: plugs and receptacles – fiberglass-reinforced polyester.
- Contacts – brass.

Dimensions



Standard Finishes:

- Copper-free aluminum – natural.
- Stainless steel – natural.
- Brass – Bright Dip.
- Fiberglass-reinforced polyester – natural (red).

Electrical Rating Ranges:

- 3-Wire, 4-Pole: Fusible or non-fusible:
240 VAC 250 vdc: 600 vac
60, 100 amperes
- 15 to 75 HP

Certifications and Compliances:

- NEC/CEC: Class II, Division 1 and 2, Group G
Class III
- CSA Encl. 3,5
- NEMA: 3,12



Options:

The following special options are available by adding suffix to Cat. No.

Description

- Special polarity for use where two or more receptacles of the same ampere rating, style and number of poles are to be installed in the same area for use on different voltages. Available as follows:
- Receptacle interior rotated 22½ degrees to right (viewed from face) and plug changed to match S4
 - Breather (drain furnished as standard) S219
 - Conduit arrangements other than standard can be supplied Details on request.

Ordering Information:

System	Amps	Conduit Opening Sizes	Max. HP Rating 240VAC	Max. HP Rating 600VAC	Interlocks		Mating Arktime® Plugs	
					DSR 240VAC 250VDC Cat. #	600VAC 250VDC Cat. #	Dia. Outside of Cable Flexible Conduit or Armored Cable	Style 2 3-wire 4-pole Cat. #
3-Wire, 4-Pole	60	1½	15	50	DSR632**	DSR6352*	.75 to 1.45	APJ6485
Style 2, Fusible	100	1½	30	75		DSR10352*	1.00 to 1.70	APJ10487
3-Wire, 4-Pole	60	1½	15	50	DSR6342	DSR63542	.75 to 1.45	APJ6485
Style 2, Non-Fusible	100	1½	30	75	DSR10342	DSR103542	1.00 to 1.70	APJ10487

* Arranged for Class J fuses.
** Arranged for Class H fuses.

WSQC Interlocked Arktite® Receptacles with Enclosed Switches

30 & 60A
600 VAC
NEMA 3R,12

Raintight
Dust Tight

3P

APJ Plugs

Application:

WSQC dead front interlocked receptacles with APJ, NPJ, BP or FP plugs are used:

- to supply power to portable electrical equipment such as hand lamps, lighting systems, power tools, conveyors, welders, compressors, etc.
- in damp, wet or corrosive locations
- indoors or outdoors in non-hazardous areas
- in locations where mounting area is confined and compact equipment is required

Features:

- NEMA 3R, 12
- Rainproof, dust tight
- Available in 30 & 60 amps
- Horsepower rated switch
- Smallest footprint for interlocked receptacles
- Padlockable in OFF position; meets OSHA lockout/tagout requirements
- Compatible with Arktite™ APJ aluminum and NPJ Krydon™ material non-metallic plugs

Standard Materials:

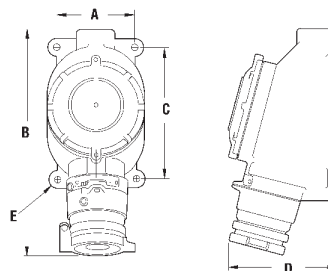
- Enclosure – copper-free aluminum
- Cover & spring door – copper-free aluminum
- Insulator – Krydon™ material
- Contacts – brass
- Cover Gasket – Neoprene

Certifications & Compliances:

- NEMA 3R, 12
- CSA Standard C22.2 No. 14, 182.1
- UL and cUL Listed



Dimensions (In Inches)



Amps	A	B	C	D	E
30A	3 $\frac{1}{8}$	9 $\frac{3}{4}$	—	5 $\frac{3}{4}$	$\frac{3}{8}$
60A	5	14 $\frac{7}{16}$	8 $\frac{1}{2}$	7	1 $\frac{3}{32}$

Horsepower Ratings

Amps	Single Phase				Three Phase			
	120V	240V	480V	600V	120V	240V	480V	600V
30A	2	5	7 $\frac{1}{2}$	7 $\frac{1}{2}$	3	7 $\frac{1}{2}$	15	15
60A		10	25	30		10	25	30

Ordering Information

Amps	Hub	Config.	Catalog No.
30A	$\frac{3}{4}$ "	2W3P	WSQC2330
	1"	2W3P	WSQC3330
	$\frac{3}{4}$ "	3W4P	WSQC2340
	1"	3W4P	WSQC3340
60A	1 $\frac{1}{2}$ "	2W3P	WSQC5630
	1 $\frac{1}{2}$ "	3W4P	WSQC5640

OPTIONS:

- Interior rotated 22 $\frac{1}{2}$ ° to the right (viewed from face) – add suffix to Cat. # – S4, ex: WSQC5640 S4

3P
Interlocked
Plugs and
Receptacles