

Description	Page No.
<b>Application/Selection</b>	<b>894-897</b>
<b>Hazardous Area Hangers</b>	
Adjustable Type UNR	911
Flexible Type EC Series	905
Locking Coupling COUP Series	911
Outlet Box Type EAHC/EFHC Series GUA/GUF Series CPS Series	906 909, 910 908
Outlet Box Type with Flexible Cushion EFHX Series	907
<b>Non-Hazardous Area Fittings</b>	
Conduit Clamps CHS Series	903
<b>Non-Hazardous Area Hangers – Flexible Type</b>	
Ball and Cushion ARB Series UNJ/UNJC Series	901 899, 900
Cushion – Vaportight AHG Series UNHC Series	899, 900 903
Hooks and Loops UNE, UNH, UNHC Series	902, 903
Outlet Box – Ball and Cushion AL Series	898, 900
Quick Disconnect Type FHM Series	904

# 8L Luminaire Hangers and Accessories – For Pendant Mount

## Application & Selection

### Application:

Luminaire hangers listed in this section are used for pendant suspension of incandescent, high intensity discharge and fluorescent industrial luminaires. They are especially suitable for use in locations where moisture, dust, and corrosion are a problem.

### Hangers for Non-Hazardous Locations:

- Hangers listed provide a wide variety of mounting means. Luminaires may be suspended from cast outlet boxes, stamped steel outlet boxes, or directly from the conduit system. Also offered are several styles of hook type hangers, used to suspend luminaires by means of conduit stems or support rods from span wires, horizontal conduit and luminaire loops.
- All hangers are flexible, permitting luminaire and supporting stem to swing freely. This feature permits luminaires to hang plumb and prevents damage to the luminaire, stem and outlet box in case of high wind or accidental impact.
- Hangers are constructed so that luminaires cannot be rotated, thereby eliminating wire twisting and possible damage to connections.
- Cushion hangers, listed for most styles, include a spring which carries the weight of the luminaire. This feature prolongs lamp life and protects the luminaire assembly from shock or vibration.
- All hangers are easily installed. With many, the luminaire, stem and support member can be assembled and wired at the work bench before making the final installation. With several, a quick disconnect plug and receptacle feature is either provided or can be easily arranged, to facilitate luminaire installation and removal for maintenance.

### Hangers for Hazardous Locations:

- As required by NEC Article 501 and CEC Part I Section 18, rigid conduit luminaire stems longer than 12" must be permanently and effectively braced or flexibility provided in the form of a fitting or flexible support.
- A variety of hangers is offered for both rigid conduit suspension and flexible suspension. Flexible luminaire hangers listed comply with NEC Article 501 and CEC Part I Section 18 and also permit luminaires to hang plumb.

### Considerations for Selection:

#### Location:

- Will it be a hazardous or non-hazardous location?
- Will it require more stringent corrosion protection material?

#### Lighting luminaire to be used:

- Some hangers can be used with a multitude of luminaires; others are specialized.
- Weight of luminaire is a consideration in selecting cushion hangers.

### Typical Luminaire Weights:

Luminaire Type	Weight (lbs.)	Luminaire Type	Weight (lbs.)	Luminaire Type	Weight (lbs.)
<b>Incandescent:</b>		<b>H.I.D.:</b>		<b>Hazard-Gard® Series</b>	
<i>VAPORGARD™ Series</i>		<i>Champ® Series</i>			
VDA12	1½	AMV	20¼	EVMA50W HPS	41
VDA12G	4	DMVC2A100GP	28¾	EVMA70W HPS	41
VDA12GP	4¼	DMVC2A175GP	30	EVMA100W HPS	45
VDA15	1¼	DMVC2A250GP	31¾	EVMA100W MV	39
VDA15G	3	DMVM2A175GP	33	EVMA150W HPS (55V)	46
VDA15GP	3¼	DMVM2A250GP	33¾	EVMA150W HPS (100V)	45
VDA23	1½	DMVS2A070GP	30¾	EVMA175W MV	42
VDA23G	4	DMVS2A100GP	31¾	EVMA175W MH	43
V Series		DMVS2A150GP	34	EVMA200W HPS	47
V275	2¾	LMVS2A035GP	10¾	EVMA250W HPS	47
V2759	4¼	LMVS2A050GP	11¾	EVMA250W MV	44
		LMVS2A070GP	11¾	EVMA250W MH	44
EV Series		LMVS2A100GP	12¼	EVMA400W HPS	56
EVA240	7½	VMVC2A100GP	15	EVMA400W MV	50
EVA210	7¾	VMVC2A175GP	17¼	EVMA400W MH	52
EVA215	8	VMVC2A250GP	31	<b>Fluorescent:</b>	
EVA220	10½	VMVC2A250GR305	34	DMVF2A026GP	19¼
EVA230	19	VMVC2A250GRD4	31½	DMVF2A039GP	22¼
EVA292	18	VMVC2A400GR305	37	DMVFB2A026GP	19½
		VMVC2A400GRD4	34½	DMVFB2A039GP	22½
<i>Corro®Gard® Series</i>		VMVM2A175GP	17¼	EVF22062	57
NDA32	5½	VMVM2A250GP	34	EVF24062	94
NDA32G	7½	VMVM2A250GR305	37	EVF22082	52
NDA33	5½	VMVM2A250GRD4	34½	FVN4240	52
NDA33G	8¼	VMVM2A400GR305	38	FVN4340	54
		VMVM2A400GRD4	35½	FVN4260	58
		VMVS2A050GP	15¼	NFW4240	21
		VMVS2A070GP	16¼	VFA222G	4
		VMVS2A100GP	16¼	EVFT (2 Lamp)	19½
		VMVS2A150GP	16½	EVFT (4 Lamp)	36½
		VMVS2A200GP	31	FVS	12
		VMVS2A200GR305	34	<b>Reflector/Refractor Type</b>	
		VMVS2A200GRD4	31½	EV3912	1
		VMVS2A250GP	31	RA64, 636	1¼
		VMVS2A250GR305	34	RA70, 71, 739, 725	1
		VMVS2A250GRD4	31½	RD64, 636	1¼
		VMVS2A400GP	40	RD70, 71, 739, 725	1
		VMVS2A400GR305	43	PR2, 3, 5	3
		VMVS2A400GRD4	40½	R2	13½
				R5	13
				GRD4	13¾
				G241	2¼
				G245	2¼
				GR305, GR205	14

# Luminaire Hangers and Accessories – For Pendant Mount

8L

## Quick Selector Chart

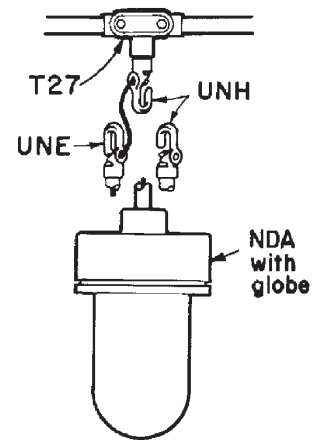
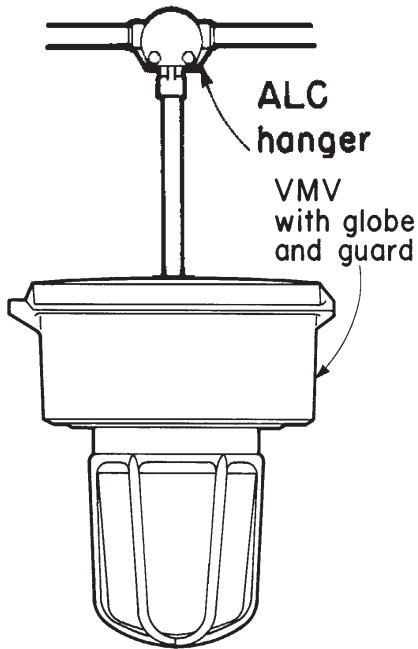
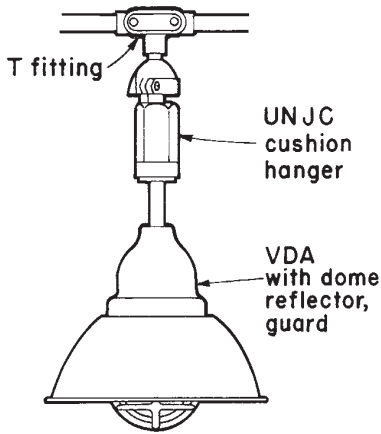
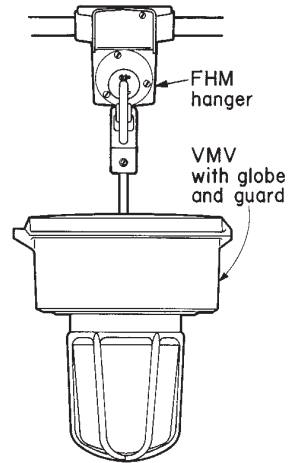
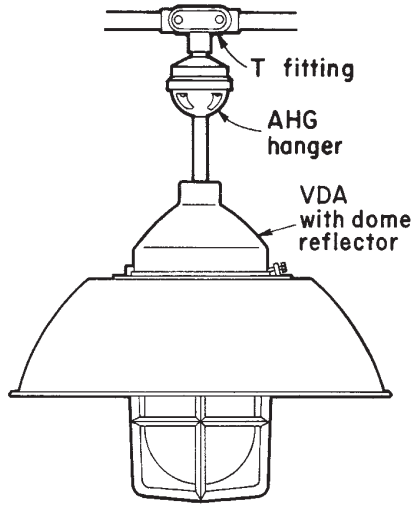
### Quick Selector Chart

Hanger Type	Function	NEC/CEC Hazardous Area Compliances	Use with Luminaire Type	Use with Mtg. Box	Luminaire Weight Capacity (Cushion)	Luminaire Weight Capacity (Ball or Plain Type)	Standard Material
AL	Outlet box and hanger	Class I, Div. 2	Any non-hazardous or Class I, Div. 2	None needed	3-48 lbs.	125 lbs.	Body – Feraloy® iron alloy Nipple – malleable iron Cover – sheet steel
FHM	Quick disconnect between luminaire and outlet box	Not applicable	Any non-hazardous	None needed		125 lbs.	Body – copper-free aluminum Cover – steel Loop and assembly – copper-free aluminum or steel
AHG	Gasketed hanger (vaportight)	Class I, Div. 2; Class II, Div. 2; Class III Wet locations NEMA 3, 3R	Any non-hazardous or Div. 2 luminaires	Any	4-30 lbs.	—	Housing – malleable iron and Feraloy iron alloy Stem support – Feraloy iron alloy
UNJ/UNJC	Ball and cushion hanger	Class I, Div. 2	Any non-hazardous or Class I, Div. 2	Any	6-48 lbs.	125 lbs.	Body – malleable iron Clamp – copper-free aluminum
ARB	Ball or cushion hanger	Class I, Div. 2	Any non-hazardous or Class I, Div. 2	GRF	4-30 lbs.	125 lbs.	Body – Feraloy iron alloy
UNE, UNH, UNHC	Quick disconnect hanger hook	Class I, Div. 2	Any non-hazardous or Class I, Div. 2	Not applicable	12-64 lbs.	125 lbs.	Malleable iron, copper-free aluminum
EC	Explosion-proof flexible hanger	Cl. I, Groups A, B, C, D; Cl. II, Groups E, F, G; Cl. III	Any hazardous	Any	—	—	Body – bronze hose Fittings – steel
GUA, GUJ, GUF	Explosion-proof boxes and hanger covers	Cl. I, Groups C, D; Cl. II, Groups E, F, G; Cl. III	Any hazardous	None needed	—	125 lbs.	Boxes – Feraloy iron alloy Cover – copper-free aluminum
EAHC, EFHC	Explosion-proof hanger	Cl. I, Groups A, B, C, D; Cl. II, Groups E, F, G; Cl. III	Any hazardous	None needed	—	125 lbs.	Body – Feraloy iron alloy Cover – copper-free aluminum
UNR	Explosion-proof adjustable hanger	Cl. I, Groups C, D; Cl. II, Groups E, F, G; Cl. III	Any hazardous or non-hazardous	Any	—	125 lbs.	Feraloy iron alloy
EFH	Explosion-proof boxes and hangers	Cl. I, Groups C, D; Cl. II, Groups E, F, G; Cl. III	Any hazardous	None needed	65 lbs.	—	Feraloy iron alloy

8L Lighting Accessories

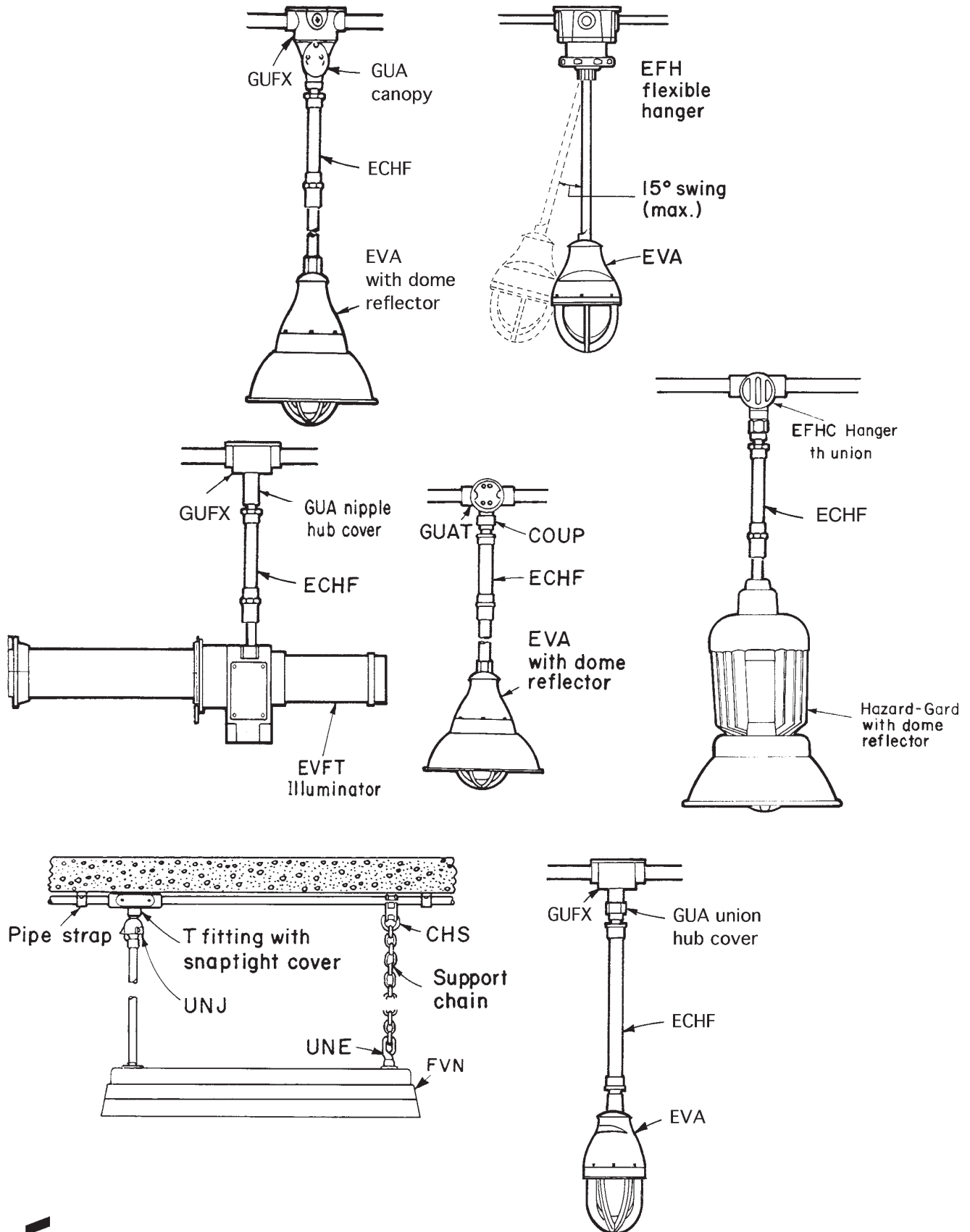
# 8L Luminaire Hangers and Accessories – For Pendant Mount

## Typical Installations



# Luminaire Hangers and Accessories – For Pendant Mount

## Typical Installations



# 8L AL Flexible Luminaire Hangers For Pendant Mount

Class I, Div. 2, Groups A, B, C, D

## Features:

Functions as both conduit outlet box and luminaire hanger. Hubs are provided for threading the conduit directly into the hanger body. For use with incandescent, H.I.D. and fluorescent luminaires.

- Supporting nipple, ball or cushion type, is a universal joint permitting luminaire to swing through an angle of 20 degrees in any direction from the perpendicular.
- Cover has one screw hole and one open slot – easily swung aside for wiring without removal and possible loss of cover.
- Luminaire, conduit stem and nipple can be assembled and wired at the work bench. The assembly is then placed in the hanger body and luminaire wires spliced to the circuit wires.
- Provided with a separate grounding wire for ground connections.

## Standard Materials:

- Body – *Feraloy*® iron alloy
- Nipple – malleable iron
- Cover – sheet steel

## Standard Finishes:

- *Feraloy* and malleable iron – zinc electroplate and aluminum acrylic paint
- Sheet steel – electrogalvanized with chromate finish

## Size Ranges:

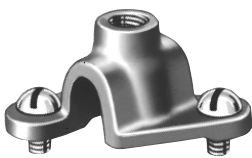
- Conduit hubs – 3/4" to 1"
- Luminaire stem – 1/2" and 3/4"
- Luminaire weight – cushion type, 3 to 48 lbs.; ball type, 125 lbs.

## Options:

- The following special options are available from factory by adding suffix to Cat. No.:

Description	Suffix to be Added to Cat. #
-------------	------------------------------

Suspension attachment for span wire or threaded rod. See listings. . . . . S1



## Suspension Attachment For horizontal cable or vertical support rod

AL hangers can be furnished with a loop fastened to the top of the body to provide a means for suspending luminaires from vertical support rods or horizontal span wires. The loop will take a wire or cable with a maximum diameter of 3/8". The boss on top of the loop is tapped 3/8"-16 to accept a threaded rod.



Ball



Cushion

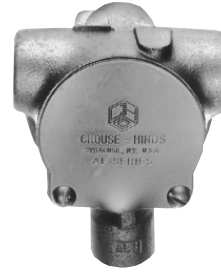
### ALC

#### Ball

Luminaire Stem Size	Conduit Size	Cat. #
1/2	3/4	ALC21
3/4	3/4	ALC22
3/4	1	ALC32

#### Cushion

Luminaire Stem Size	Conduit Size	Luminaire Weight Lbs.	Cat. #
1/2	3/4	3 to 6	ALC214
3/4	3/4		ALC224
3/4	1		ALC324
1/2	3/4	6 to 12	ALC218
3/4	3/4		ALC228
3/4	1		ALC328
1/2	3/4	12 to 24	ALC2116
3/4	3/4		ALC2216
3/4	1		ALC3216
1/2	3/4	24 to 48	ALC2132
3/4	3/4		ALC2232
3/4	1		ALC3232



Ball



Cushion

### ALT

#### Ball

Luminaire Stem Size	Conduit Size	Cat. #
1/2	3/4	ALT21
3/4	3/4	ALT22
3/4	1	ALT32

#### Cushion

Luminaire Stem Size	Conduit Size	Luminaire Weight Lbs.	Cat. #
1/2	3/4	3 to 6	ALT214
3/4	3/4		ALT224
3/4	1		ALT324
1/2	3/4	6 to 12	ALT218
3/4	3/4		ALT228
3/4	1		ALT328
1/2	3/4	12 to 24	ALT2116
3/4	3/4		ALT2216
3/4	1		ALT3216
1/2	3/4	24 to 48	ALT2132
3/4	3/4		ALT2232
3/4	1		ALT3232

# AHG, UNJ and UNJC Flexible Luminaire Hangers

## For Pendant Mount

AHG – Class I, Div. 2, Groups A, B, C, D  
 Class II, Div. 2, F, G  
 Class III

**8L**

Wet Locations NEMA 3, 3R

UNJ, UNJC – Class I, Div. 2, Groups A, B, C, D

### Features:

- For connection to conduit hub or hub cover of supporting conduit fitting
- For incandescent, H.I.D., and fluorescent luminaires
- Cushion support for conduit stem is a universal joint permitting luminaire to swing through an angle of 8 degrees in any direction from the perpendicular
- Gasketed by means of a durable neoprene diaphragm which excludes moisture and dirt from both luminaire and conduit system



### Certifications and Compliances:

- Class I, Div. 2
- Class II, Div. 2
- Class III
- Wet Locations
- NEMA 3,3R

### Standard Materials:

- Housing: top cap – malleable iron; bottom cap – *Feraloy*® iron alloy
- Luminaire stem support – *Feraloy* iron alloy

### AHG

#### Cushion Vaportight for Class I, Div. 2; Class II, Div. 2; Class III

Luminaire Stem Size*	Male Nipple Size*	Luminaire Weight Lbs.	Cat. #
3/4	3/4	4 to 8	AHG22103
3/4	3/4	8 to 16	AHG22104
3/4	3/4	16 to 30	AHG22111

### Standard Finishes:

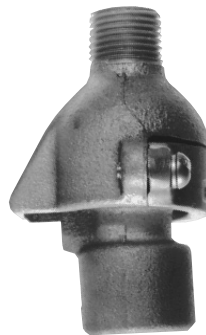
- *Feraloy* iron alloy and malleable iron – electrogalvanized and aluminum acrylic paint

### Size Ranges:

- Male nipple – 3/4"
- Luminaire stem – 3/4"
- Luminaire weight – 4 to 30 lbs.

### Features:

- For connection to conduit hub or hub cover of supporting conduit fitting
- For incandescent, H.I.D., and fluorescent luminaires
- Supporting nipple, ball or cushion type, is a universal joint permitting luminaires to swing through an angle of 20 degrees in any direction from the perpendicular



### Standard Materials:

- Body and nipple – malleable iron
- Clamp – copper-free aluminum

### UNJ Ball

Luminaire Stem Size	Male Nipple Size	Cat. #
1/2	1/2	UNJ1
3/4	3/4	UNJ2

### UNJC Cushion

Luminaire Stem Size*	Male Nipple Size*	Luminaire Weight Lbs.	Cat. #
3/4	3/4	6 to 12	UNJC28
3/4	3/4	12 to 24	UNJC216
1/2	1/2	24 to 48	UNJC132
3/4	3/4	24 to 48	UNJC232

### Standard Finishes:

- Malleable iron – electrogalvanized and aluminum acrylic paint
- Copper-free aluminum – natural finish

### Size Ranges:

- Male nipple – 1/2" and 3/4"
- Luminaire stem – 1/2" and 3/4"
- Luminaire weight: cushion type – 6 to 48 lbs.; ball type – 125 lbs.

### Certifications and Compliances:

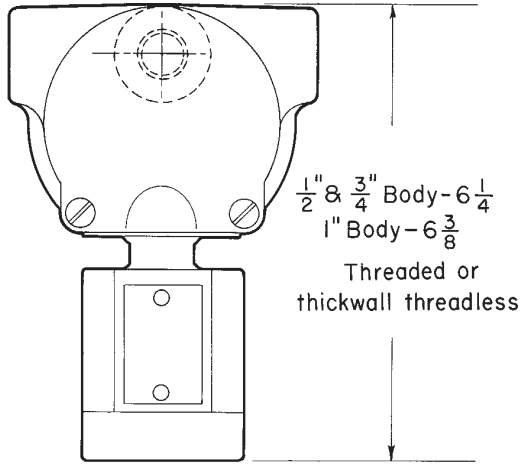
- NEC: Class I, Div. 2.

\* 1/2" connection can be made by using reducers.

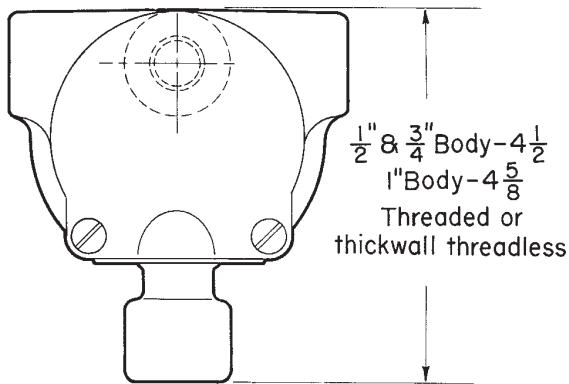
# 8L Flexible Luminaire Hangers

## For Pendant Mount Dimensions

### AL Series

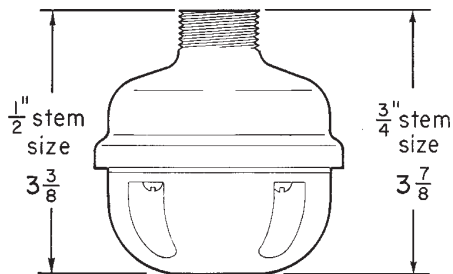


### Cushion

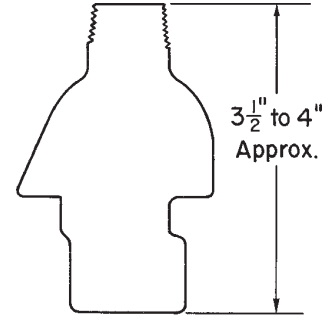


### Ball

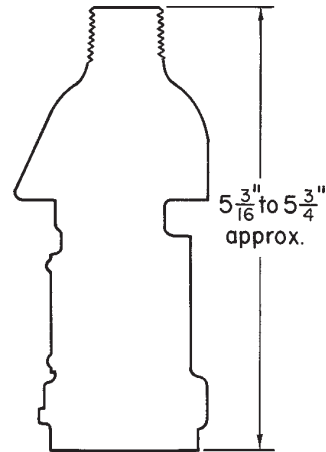
### AHG



### UNJ



### UNJC





# ARB and GS Flexible Luminaire Hangers

## For Pendant Mount

Class I, Div. 2, Groups A, B, C, D

8L

### Features:

- Available in two styles – one for direct attachment to GRF cast outlet boxes by 4 screws, the other for direct attachment to 4" octagonal stamped steel outlet boxes by 2 screws. For incandescent, H.I.D. and fluorescent luminaires
- Both styles available with ball or cushion support for conduit stem to permit luminaire swing in any direction. Ball type provides 11 degree swing, cushion type 8 degree swing from the perpendicular
- Gasketed cushion hangers for GRF are provided with a durable neoprene diaphragm which excludes moisture and dirt from both luminaire and conduit system

### Standard Materials:

- Mounting plate: for GRF – *Feraloy*® iron alloy; for 4" outlet boxes – sheet steel
- Hanger body and luminaire stem support – *Feraloy* iron alloy

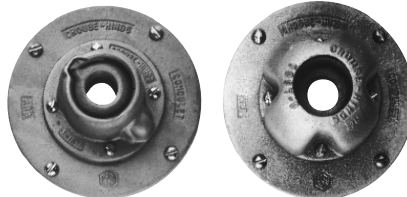
### Standard Finishes:

- Feraloy* – electrogalvanized and aluminum acrylic paint
- Sheet steel – electrogalvanized with chromate finish

### Size Ranges:

- Luminaire stem – 1/2" and 3/4"
- Luminaire weight: cushion type – 4 to 30 lbs.; ball type – 125 lbs. (ARB6 and ARB2 maximum weight 60 lbs.)

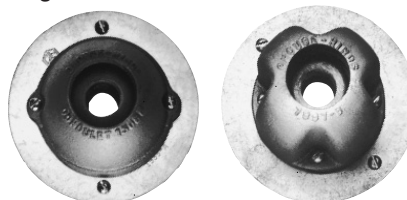
For GRF and VXF outlet boxes only



Ball

Cushion

For GRF and VXF outlet boxes and 4" octagonal outlet boxes



Ball

Cushion

### ARB Fits GRF and VXF Outlet Boxes

#### Ball

Description	Luminaire Stem Size	Luminaire Weight (Max.)	Cat. #
Surface	1/2	125	ARB62
Flush	1/2	125	ARB67
Surface	125	3/4	ARB662

#### Cushion Surface

Luminaire Stem Size	Luminaire Weight Lbs.	Cat. #
1/2	4 to 8	ARB82
1/2	8 to 16	ARB102
1/2	16 to 30	ARB122

### Cushion Surface – Vaportight with Neoprene Diaphragm

Luminaire Stem Size	Luminaire Weight Lbs.	Cat. #
1/2	4 to 8	ARB821
1/2	8 to 16	ARB1021
1/2	16 to 30	ARB1221

### ARB Fits GRF, VXF and 4" Outlet Boxes

#### Ball

Luminaire Stem Size	Luminaire Weight (Max.)	Cat. #
1/2	60	ARB6
3/4	60	ARB2

#### Cushion

Luminaire Stem Size	Luminaire Weight Lbs.	Cat. #
1/2	4 to 8	ARB8
1/2	8 to 16	ARB10
1/2	16 to 30	ARB12

# 8L UNE, UNH and UNHC Flexible Luminaire Hangers For Pendant Mount

Cl. I, Div. 2 Groups A, B, C, D

The following applies to all items on this page:

### Application:

- Provides a simple, inexpensive, quick disconnect method for hanging pendant luminaires. For incandescent, H.I.D. and fluorescent luminaires
- Permits free swing in any direction to prevent damage to luminaire stem. Cushion style provides additional protection from vibration to prolong lamp life

### Features:

- Female hooks and loops are used with rigid conduit luminaire stems to suspend luminaires. They may also be used with male hooks and loops, threaded into a conduit outlet hub.
- All hooks and loops are provided with openings for passage of luminaire wires. Luminaire, conduit stem and hook or loop can be assembled and wired at the work bench. The assembly is then hung on the fixed hook and connection made.
- For ease of relamping and maintenance, the outlet fitting can be equipped with an attachment plug receptacle cover and a matching plug cap used with the luminaire assembly. For permanent wiring a wire hole cover may be used.

**Applicable to UNE and UNH (upper listings) only:**

### Features:

- Shape of hooks is such that accidental disengagement is impossible
- Diameter of wire opening 1/2"

### Standard Materials:

- Malleable iron

### Standard Finishes:

- Cadmium electrogalvanized and aluminum acrylic paint

### Size Ranges:

- Luminaire stem or hub – 1/2" and 3/4"
- Luminaire weight – 125 lbs.

**Applicable to UNH and UNHC (lower listings) only:**

### Features:

- Hooks are shaped to permit easy installation of large heavy luminaires, such as H.I.D. and fluorescent units
- Diameter of wire opening 5/8"

### Standard Materials:

- Copper-free aluminum

### Standard Finishes:

- Natural

### Size Ranges:

- Luminaire stem – 1/2" and 3/4"
- Luminaire weight: cushion type – 12 to 64 lbs.; plain type – 125 lbs.



Male



Female



Male



Female

UNH

UNE

## UNE and UNH Flexible Luminaire Hangers For Pendant Mount

Type	Style	Luminaire Stem Size	Luminaire Weight Lbs.	Cat. #
UNH	Male	1/2"	125	UNH16
	Male	3/4"	125	UNH26
UNH	Female	1/2"	125	UNH1
	Female	3/4"	125	UNH2
UNE	Male	1/2"	125	UNE16
	Male	3/4"	125	UNE26
UNE	Female	1/2"	125	UNE1
	Female	3/4"	125	UNE2



Female



Female Cushion

## UNH and UNHC Flexible Luminaire Hangers

Type	Style	Luminaire Stem Size	Luminaire Weight Lbs.	Cat. #
UNH	Female	1/2"	125	UNH182
UNHC	Female	3/4"	12 to 24	UNHC216
	Cushion	3/4"	24 to 48	UNHC232
	Cushion	3/4"	48 to 64	UNHC264

## For Support Only CHS Conduit Clamp; UNH Conduit Hook; For Pendant Mount Fluorescent Luminaires

### Application:

- Used for support of pendant fluorescent luminaires
- UNHC provides cushion support for luminaires suspended by 1/4" or 5/16" threaded rod, and is used with the ring of CHS conduit clamps
- UNH hook provides an extremely simple means of conduit suspension for the unwired end of a fluorescent luminaire, as it merely hooks over the horizontal supporting conduit

### Features:

- The bushing in UNHC cushion hangers is tapped for both 1/4" and 5/16" suspension rod, with the lower half tapped 5/16". Either size rod can be used without reversing the bushing
- CHS conduit clamp firmly grips the conduit and the ring at bottom accepts either a hooked rod or the UNHC cushion hanger for threaded rod. Will also accept UNH and UNHC hangers for conduit stem listed on the preceding page.
- The UNH conduit hook fits over conduit up to and including 1" and has a hub for attachment of a 1/2" conduit stem



### UNHC Cushion Luminaire Hangers

Luminaire Weight Lbs.	Support Rod Tap	Cat. #
12 to 24	1/4"-20	UNHC2816
24 to 48	and	UNHC2832
48 to 64	5/16"-18	UNHC2864



Clamp



Hook

### CHS Conduit Clamp and UNH Hook

Conduit Size	Clamp Cat. #	Hook Cat. #	Hook Hub Size
1/2	CHS1437	UNH13	1/2
3/4	CHS2437		
1	CHS3437		

### Standard Materials:

- UNHC – copper-free aluminum
- CHS-body – malleable iron; clamp – copper-free aluminum; ring – steel wire
- UNH – *Feraloy*® iron alloy

### Standard Finishes:

- Copper-free aluminum – natural finish
- *Feraloy* and malleable iron – electrogalvanized and aluminum acrylic paint
- Steel wire – electrogalvanized with chromate finish

### Size Ranges:

- Luminaire stem (UNH) – 1/2"
- Conduit (CHS): 1/2" to 1"
- Luminaire weight: UNHC cushion – 12 to 64 lbs.; CHS, UNH – 125 lbs.

# 8L FHM Power Hook Luminaire Hangers

## For Pendant Luminaires

### Features:

- For mounting H.I.D. type luminaires in non-hazardous locations
- Power hook housing has two 3/4" through feed hubs and one 3/4" hub on the top for pendant mounting. Through feed hubs are furnished with flush plugs
- Cast mounting lugs are provided for direct ceiling mounting
- Housing contains a roomy 15 cu. in. splicing chamber and interlocking type receptacle with leads
- Plugs and receptacles are interlocking type to prevent accidental disengagement. When plug is inserted, hook is blocked and luminaire assembly cannot be removed. To service the luminaire, pull the plug, unhook the loop luminaire assembly and take it to a convenient servicing area
- Loop can move a maximum of 30°, allowing the power hook to be mounted on a canted ceiling. The luminaire assembly will hang true to the vertical
- Loop and hook are shaped for self alignment and resist twisting of luminaire by gusts of wind or light drafts
- Supporting loop is furnished with 16" of #16-3/C type SO cord and an interlocking type plug

### Standard Materials:

- Power hook body – copper-free aluminum
- Access cover – zinc plated cold rolled steel
- Loop – copper-free aluminum

### Standard Finishes:

- Copper-free aluminum – natural finish
- Steel – electrogalvanized with chromate finish

### Size Ranges:

- Hubs – 3/4"
- Luminaire weights: loop – up to 125 lbs.;
- Loop luminaire stem size – 3/4"

### Electrical Rating Ranges:

- 480 volts, 14 amps, 2 wire, 3 pole

### Certifications and Compliances:

- Meet UL and NEMA requirements for the listed electrical ratings

### FHM

### For H.I.D. Type Luminaires with voltages up to 480 volts

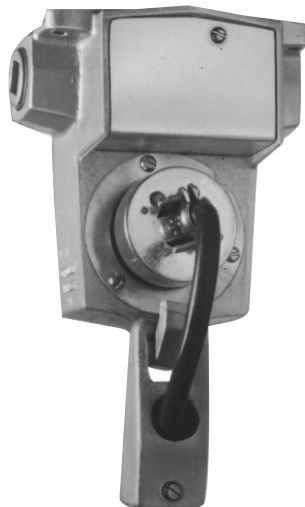
Loop  
Plain

Hubs\*  
3/4

Luminaire  
Stem\*  
3/4

Luminaire  
Weight  
Lbs.  
125

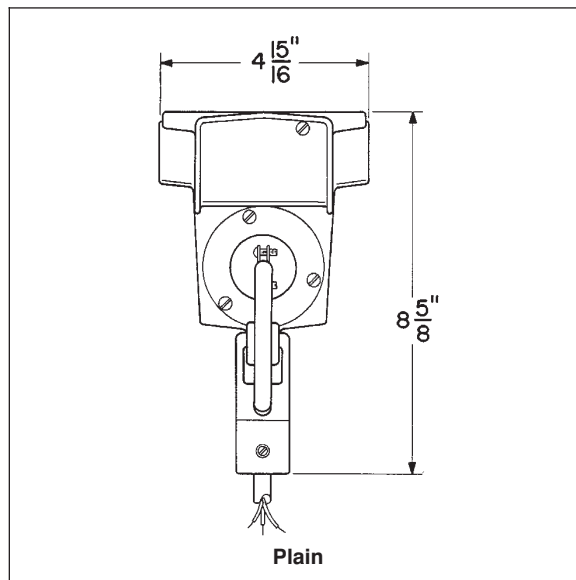
Cat. #  
FHM201



Plain

\* 1/2" connection can be obtained by using reducers

### Dimensions



# ECHF Flexible Luminaire Supports

## For Pendant Mount

Cl. I, Div. 1 & 2, Groups A, B, C, D  
 Cl. II, Div. 1, Groups E, F, G  
 Cl. II, Div. 2, Groups F, G  
 Cl. III

Explosionproof  
 Dust-Ignitionproof

**8L**

### Application:

ECHF series flexible luminaire supports are used in hazardous locations:

- where a luminaire must hang more than 12" from its supporting junction box (as specified by NEC Article 501 and CEC Part I Section 18)
- to assure that luminaires hang plumb and will swing freely if accidentally struck.

Prevents damage to luminaire and supporting outlet fitting

### Features:

- Complies with NEC Article 501/CEC Part I Section 18
- Free swinging in any direction through a large arc
- Good electrical continuity – no bonding jumpers needed
- Watertight construction
- Insulating liner of asphalt impregnated fiber to protect conductors
- Constructed to reinforced flexible metal hose
- Two female end fittings, each with a removable short nipple
- Nipples fit set screw type luminaire hubs
- Female end fittings are equipped with set screws to prevent turning during relamping and loosening of fitting with vibrations

### Standard Materials:

- Inner core – brass
- Outer braid – bronze
- End fittings – bronze
- End fittings – brass (CSA certified units)

### Standard Finishes:

- Brass and bronze – natural

### Options:

Description	Suffix to be Added to Cat. #
Material – stainless steel hose and end fittings . . . . .	S516
Finish – flexible neoprene protective coating . . . . .	S758
Special lengths and sizes available . . . . .	Detailed information on request

### Size Ranges:

- Flexible length – 4" to 18"
- Nipple size – 1/2" and 3/4" (see "Options")
- Luminaire weight – up to 125 lbs.

### Certifications and Compliances:

- NEC/CEC: Class I, Groups A, B, C, D  
 Class II, Groups E, F, G  
 Class III
- UL Standard: 886
- CSA Standard: C22.2 No. 30



ECHF

#### Description

Flexible Length	Nipple Size	Overall Length	Cat. #
4	1/2	10	ECHF14
	3/4	10	ECHF24
6	1/2	12	ECHF16
	3/4	12	ECHF26
8	1/2	14	ECHF18
	3/4	14	ECHF28
10	1/2	16	ECHF110
	3/4	16	ECHF210
12	1/2	18	ECHF112
	3/4	18	ECHF212
15	1/2	21	ECHF115
	3/4	21	ECHF215
18	1/2	24	ECHF118
	3/4	24	ECHF218

# 8L EAHC and EFHC Luminaire Hangers For Pendant Mount

Cl. I, Div. 1 & 2, Groups A\*, B\*, C, D  
 Cl. II, Div. 1, Groups E, F, G  
 Cl. II, Div. 2, Groups F, G  
 Cl. III

Explosionproof  
 Dust-Ignitionproof

## Application:

EAHC and EFHC luminaire hangers are for use in hazardous areas to:

- suspend explosionproof pendant luminaires from the conduit system
- function as both conduit outlet box and luminaire hanger

## Features:

- Through feed hubs are provided for threading the conduit directly into the hanger body
- Has large threaded cover for accessibility and ease of wiring
- Bottom hub, threaded or union style, is equipped with set screws to securely lock luminaire stem in place. Takes conduit stem or EC flexible luminaire hanger for stems longer than 12" (in compliance with NEC Article 501 and CEC Part I Section 18)

## Standard Materials:

- Bodies – *Feraloy*® iron alloy
- Covers – copper-free aluminum

## Standard Finishes:

- *Feraloy* – electrogalvanized and aluminum acrylic paint
- Copper-free aluminum – natural

## Options:

Description	Suffix to be Added to Cat. #
Finish – <i>Corro-free</i> ™ epoxy enamel . . . .	S752
Suspension attachment for span wire or threaded rod – see listings . . . . .	S1
Mounting strap – see listings . . . . .	S294

## Size Ranges:

- Conduit hubs – ¾" and 1"
- Luminaire stem – ½" and ¾"
- Luminaire weight – 125 lbs.

## Certifications and Compliances:

- NEC/CEC:
  - EAHC –
    - Class I, Groups A, B, C, D
    - Class II, Groups E, F, G
    - Class III
  - EFHC –
    - Class I, Groups C, D
    - Class II, Groups E, F, G
    - Class III
- UL Standard: 886
- CSA Standard: C22.2 No. 30



With union hub

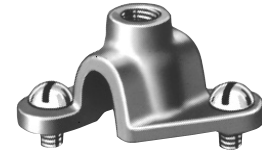


With threaded hub



## Mounting Strap

Mounting strap can be furnished to fasten luminaire hangers to mounting surface, independent of conduit straps. To order, add suffix S294 to EAHC or EFHC Cat. No.



## Suspension Attachment

EAHC and EFHC hangers can be furnished with a loop fastened to the top of the body to suspend luminaire and conduit from vertical support rods or horizontal span wires. The loop will take a wire or cable with a maximum diameter of 3/8". The boss on top of the loop is tapped 3/8"-16 to accept a threaded rod. To order, add suffix S1 to Cat. No.

## EAHC\*

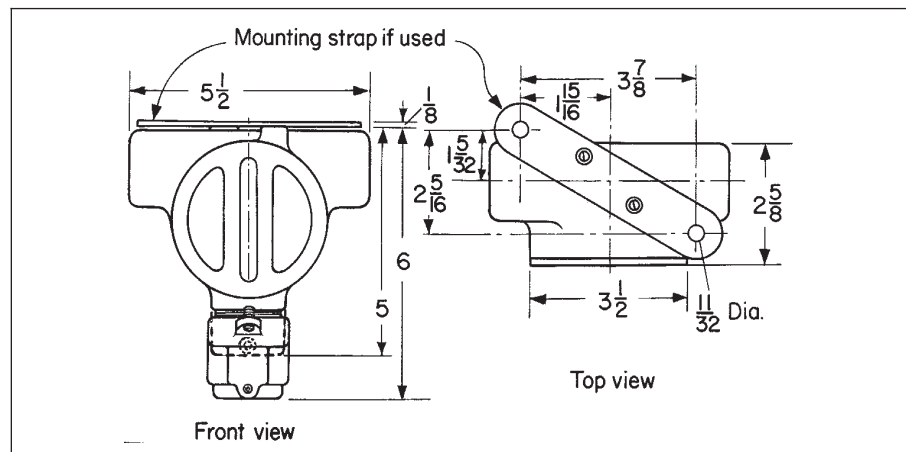
Hub Size	Luminaire Stem Size	Threaded Hub for Luminaire Stem Cat. #	Union Hub for Luminaire Stem Cat. #
¾	½	EAHC2701	EAHC2601
	¾	EAHC2702	EAHC2602
1	½	EAHC3701	EAHC3601
	¾	EAHC3702	EAHC3602

## EFHC

¾	½	EFHC2701	EFHC2601
	¾	EFHC2702	EFHC2602
1	½	EFHC3701	EFHC3601
	¾	EFHC3702	EFHC3602

\*EAHC only

## Dimensions



# EFH Flexible Cushion Luminaire Hangers

For Pendant Mount

Cl. I, Div. 1 and 2, Groups C, D  
Cl. II, Div. 1, Groups E, F, G  
Cl. II, Div. 2, Groups F, G  
Cl. III

Explosionproof  
Dust-Ignitionproof

8L

## Application:

EFH flexible cushion luminaire hangers are used in hazardous locations:

- where a luminaire must hang more than 12" from its supporting junction box (as required by NEC Article 501 and CEC Part I Section 18)
- to assure that luminaires hang plumb and will swing freely if accidentally struck. Prevents damage to luminaire, stem and supporting outlet box
- to provide a cushion support, prolonging lamp life and protecting the luminaire from shock and vibration. For luminaires weighing up to 65 lbs.

## Features:

- Complies with NEC Article 501 and CEC Part I Section 18
- Free swinging in any direction through an angle of 15 degrees from perpendicular
- Weight of luminaire is supported by a high-strength brass bellows and a stainless steel cushioning spring
- Two part assembly consisting of luminaire hanger cover and CPS12 outlet box. Provides a wide variety of conduit arrangements. A set screw locks the conduit stem in place

## Standard Materials:

- Feraloy® iron alloy

## Standard Finishes:

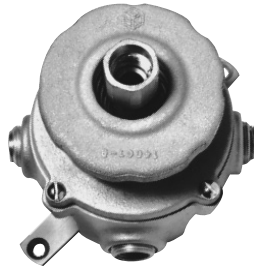
- Electrogalvanized and aluminum acrylic paint

## Size Ranges:

- Conduit hubs – 3/4" with 3/4" to 1/2" reducers
- Luminaire stem – 1/2" and 3/4"
- Luminaire weight – 65 lbs. max.

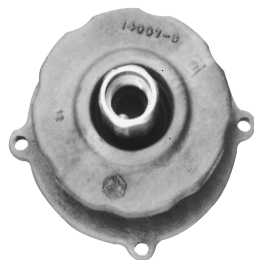
## Certifications and Compliances:

- NEC/CEC: Class I, Groups C, D  
Class II, Groups E, F, G  
Class III
- UL Standard: 886
- CSA Standard: C22.2 No. 30



## EFHX

Body Hub Size†	Luminaire Stem Size	With Mtg. Feet Cat. #
1/2 and 3/4	1/2	EFHX111
1/2 and 3/4	3/4	EFHX221

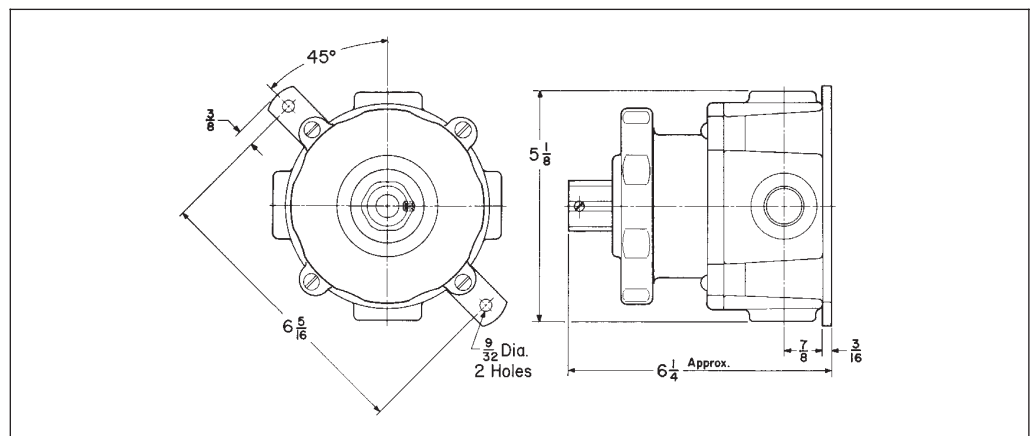


## Cushion Luminaire Hanger Only

Stem Size	Cat. #
1/2	EFH01
3/4	EFH02

† Furnished with four 3/4" standard taper tapped, integrally bushed hubs. Each hub as a 3/4" to 1/2" reducer. Three hubs are plugged.

## Dimensions



8L Lighting Accessories

# 8L Condulet® Conduit Outlet Boxes with Covers

Cl. I, Div. 1 & 2, Groups C, D  
 Cl. II, Div. 1, Groups E, F, G  
 Cl. II, Div. 2, Groups F, G  
 Cl. III

Explosionproof  
 Dust-Ignitionproof

## Application:

CPS series conduit outlet boxes are installed in conduit systems in hazardous areas to:

- protect conductors in threaded rigid conduit
- act as pull and splice boxes
- change conduit direction
- interconnect lengths of conduit
- act as luminaire hangers with hub covers
- provide access to conductors for maintenance and future system changes

## Features:

- CPS conduit outlet boxes have:
- two types of cover:
    - blank for splice or pull box use
    - threaded hub for mounting luminaires
  - wide, accurately machined body and cover mating surfaces, to insure flamtight joint
  - blind tapped holes for cover screws to further insure flamtightness
  - removable mounting feet for flush or surface mounting to wall or ceiling

## Standard Materials:

- *Feraloy*® iron alloy

## Standard Finishes:

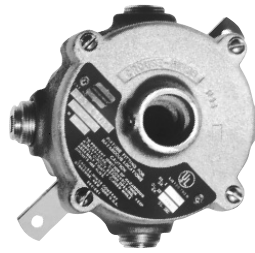
- Electrogalvanized and aluminum acrylic paint

## Options:

- *Corro-free*™ epoxy powder coat  
 ..... Information available on request

## Certifications and Compliances:

- NEC/CEC: Class I, Groups C, D  
 Class II, Groups E, F, G  
 Class III
- UL Standard: 886
- CSA Standard: C22.2 No. 30



**Box with Hub Cover**

**Hub Size**

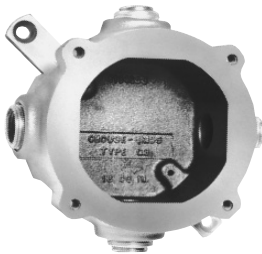
Body ‡	Cover	Cat. #
1/2 and 3/4	1/2	CPS12021
1/2 and 3/4	3/4	CPS12022



**Box with Blank Cover**

**Hub Size**

Hub Size	Cat. #
1/2 and 3/4	CPS12026



**Body**

**Hub Size ‡**

Hub Size ‡	Cat. #
1/2 and 3/4	CPS12



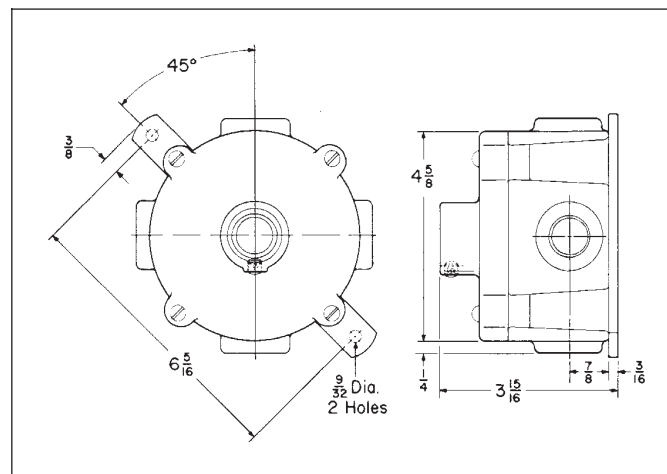
**Hub Covers**

**Hub Size**

Hub Size	Cat. #
1/2	CPS021
3/4	CPS022

‡ Furnished with four 3/4" standard taper tapped, integrally bushed hubs. Each hub has a 3/4" to 1/2" reducer. Three hubs are plugged.

## Dimensions





# GUF Outlet Bodies and Luminaire Hanger Covers

Cl. I, Div. 1 & 2, Groups C, D  
 Cl. II, Div. 1, Groups E, F, G  
 Cl. II, Div. 2, Groups F, G  
 Cl. III

Explosionproof  
 Dust-Ignitionproof

**8L**

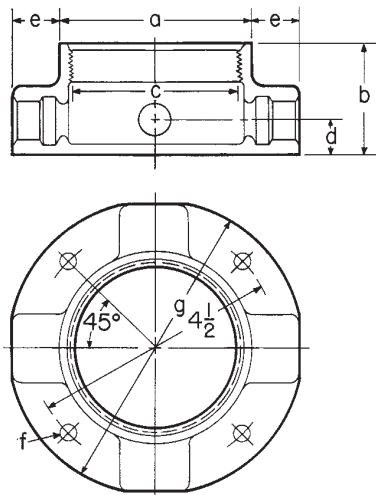


**GUFX**

Hub Size	Cat. #
1/2	GUFX160
3/4	GUFX260

## Dimensions

### GUF Series



Hub Size	a	b	c	d	e	f	g
1/2	3 1/2	2	3	5/8	7/8	5/16	5 3/8
3/4	3 1/2	2	3	3/4	7/8	5/16	5 3/8
1	3 1/2	2 3/8	3	7/8	1	5/16	5 3/8

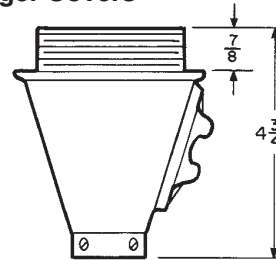
## Luminaire Hanger Covers For GUA and GUF Series Junction Boxes



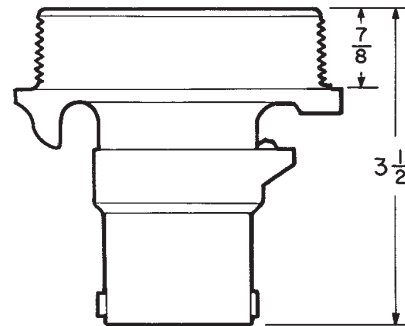
Nom. Dia. Cover Opening	Luminaire Stem Size	Luminaire canopies Cat. #	Luminaire union hub Cat. #	Luminaire covers Nipple covers Cat. #
3	3/4	GUA068	GUA0687	GUA0672

## Dimensions

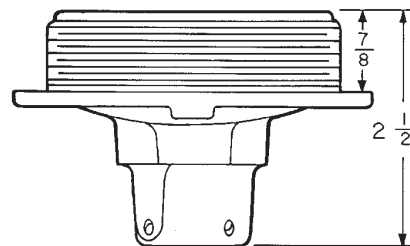
### Hanger Covers



**GUA 068**



**GUA 0687**



**GUA 0671**

**8L** Lighting Accessories

# 8L GUA Series Outlet Bodies

Cl. I, Div. 1 & 2, Groups C, D  
 Cl. II, Div. 1, Groups E, F, G  
 Cl. II, Div. 2, Groups F, G  
 Cl. III

Explosionproof  
 Dust-Ignitionproof

## Application:

GUA, GUF and GUJ outlet bodies are used:  
 • with luminaire canopies, union hub and nipple covers for mounting EVA, EVM, EVLP, and EVF luminaires

## Features:

- A threaded cover opening in the side of the canopy permits access to the interior for making splices or taps
- The luminaire with its conduit stem and canopy is wired before installation, which eliminates wire twisting when the canopy is screwed into the outlet body
- Union hub covers permits the cover to be screwed into the body without twisting wire leads
- All covers have set screws to lock the conduit stem or EC series flexible luminaire support firmly to the cover

## Standard Materials:

- Outlet bodies:
- GUA Series – *Feraloy* iron alloy
  - GUFX – Copper-free aluminum

- Luminaire hanger covers:
- GUA068 – *Feraloy* iron alloy
  - GUA0687, GUA0672 – Copper-free aluminum

## Standard Finishes:

- *Feraloy* iron alloy – electrogalvanized and aluminum acrylic paint
- Copper-free aluminum – natural

## Options:

Description	Suffix to be Added to Cat. #
Finish – <i>Corro-free</i> ™ epoxy enamel . . . . S752	

## Size Ranges:

- Bodies – 1/2" to 1" hubs
- Canopies – 1/2", 3/4" and 1 1/4" luminaire stem
- Union hub and nipple covers – 1/2" and 3/4" luminaire stem

## Certifications and Compliances:

- NEC/CEC: Class I, Groups C, D  
 Class II, Groups E, F, G  
 Class III
- UL Standard: 886
- CSA Standard: C22.2 No. 30



### GUA

Hub Size	Cat. #
1/2	GUA160
3/4	GUA260
1	GUA360



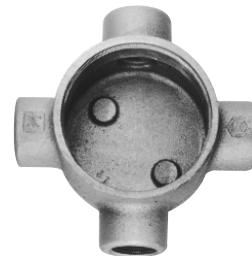
### GUAT

Hub Size	Cat. #
1/2	GUAT160
3/4	GUAT260
1	GUAT360



### GUAC

Hub Size	Cat. #
1/2	GUAC160
3/4	GUAC260
1	GUAC360



### GUAX

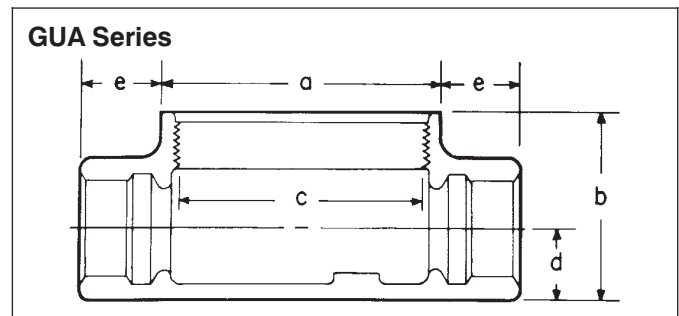
Hub Size	Cat. #
1/2	GUAX160
3/4	GUAX260
1	GUAX360



### GUAL

Hub Size	Cat. #
1/2	GUAL160
3/4	GUAL260
1	GUAL360

## Dimensions



Hub Size	a	b	c	d	e
1/2	3 1/2	2	3	5/8	7/8
3/4	3 1/2	2	3	3/4	7/8
1	3 1/2	2 5/16	3	7/8	1

# UNR Adjustable Luminaire Hangers; COUP Locking Couplings

For Pendant Mount

Cl. I, Div. 1 & 2, Groups C, D  
Cl. II, Div. 1, Groups E, F, G  
Cl. II, Div. 2, Groups F, G  
Cl. III

Explosionproof  
Dust-Ignitionproof

8L

## Application:

UNR adjustable luminaire hangers are used in hazardous areas to:

- mount between a luminaire and its outlet box so that the luminaire can be adjusted within the range of 0 degrees to 90 degrees
- permit pendant type luminaires to illuminate vertical surfaces such as a control board
- hang luminaires plumb when the supporting outlet box is not horizontal

## Features:

The luminaire is nipped onto one end of the UNR, and the other end of the UNR is nipped into the support outlet box

- Set screws are located on each end to lock the nipples in place to prevent loosening in relamping or from vibration
- Adjustment of UNR to the angle setting needed provides for the desired angle of the luminaire
- Degree markings are cast into the UNR
- Two set screws and a large stud and nut are provided, which are tightened to clamp the unit rigid

## Standard Materials:

- *Feraloy*® iron alloy

## Standard Finishes:

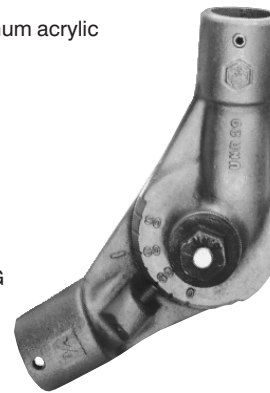
- Electrogalvanized and aluminum acrylic paint

## Size Ranges:

- Hub – ¾"
- Luminaire weight – 125 lbs.

## Certifications and Compliances:

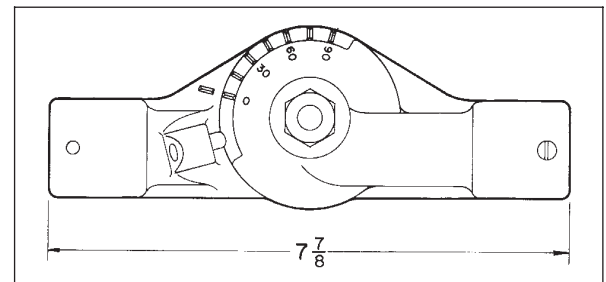
- NEC: Class I, Groups C, D  
Class II, Groups E, F, G  
Class III
- UL Standard: 886



**UNR  
Adjustable  
Luminaire Hanger**

Hub Size	Angle Adjustment	Cat. #
¾"	0° to 90°	UNR29

## Dimensions



## Application:

COUP locking couplings are used in both hazardous and non-hazardous areas to:

- lock a luminaire conduit stem into a conduit hub to prevent the conduit stem from loosening when the luminaire is relamped and torque transferred to luminaire stem
- prevent loosening of luminaire stem due to vibration
- hang pendant type luminaires from standard cast outlet boxes which do not have set screws in the hub where the luminaire stem is attached

## Features:

- The large end is slipped over the cast hub and the set screws tightened. The luminaire stem is slipped through the small end and threaded securely into the cast hub. The set screws in the small end are then tightened, thereby preventing the stem from turning
- Permits support of luminaire from conduit hub of a hazardous location outlet body

## Standard Materials:

- *Feraloy*® iron alloy

## Standard Finishes:

- Electrogalvanized and aluminum acrylic paint

## Size Ranges:

- Hub size – ½" to 1"
- Stem size – ½" and ¾"

## Certifications and Compliances:

- UL Standard: 886



**COUP  
Locking  
Couplings**

Hub Size	Stem Size	Cat. #
½"	½"	COUP101
¾"	½"	COUP201
¾"	¾"	COUP202
1"	¾"	COUP302