
Description	Page No.
Application/Selection	952
Gauge Light	958
Tank Light V160 EVA160	953, 954
Task Light EVTL1B50 EVTL1L50	955-957

12L Specialty Lighting

Tank, Task and Gauge Hazardous and Non-Hazardous Locations Application and Selection

Application:

Specialty lighting luminaires are used:

- for various task lighting requirements in locations that are hazardous (classified) due to the presence of combustible dusts or easily ignitable fibers and flyings
- in areas where conventional lighting is not acceptable due to size and/or location
- in locations where an adequate light source is necessary for tank, instrument, and gauge applications
- in manufacturing plants, refineries, pharmaceutical, chemical, petrochemical, and other industrial process facilities, waste or sewage treatment facilities, grain processing and handling facilities and other heavy industrial applications

Considerations for Selection:

Environmental:

- What is the hazardous area classification (NEC)/(CEC) of the location in which the luminaire will be installed?

Lighting levels required:

- What wattage luminaire(s) will provide the desired light level (See lighting Selector Guide, pages 665 through 689, to determine number and location of fixture required).

Physical Arrangement:

- Type of fixture mounting needed.

Product Selection:

- EV Tank Lights are suitable for use in Class I, Groups C, D hazardous (classified) locations. Tank lights are used to light the inside of tanks, vats, process vessels, etc.
- EVTL Explosionproof Task Lights are suitable for use in Class I, Group B, C, D and Class II, Groups E, F, G hazardous (classified) locations. EVTL Lights are ideal for applications in which water spray and corrosive atmospheres are considerations.
- ELG gauge lights are suitable for use in Class I, Groups C, D hazardous (classified) locations. The light is used to illuminate liquid level gauges and to direct the light over the length of the column.

Application:

The incandescent V observation luminaire is used:

- in tanks or kettles where food is processed
- to light the inside of tanks for observation of the contents through a window

Features:

- Watertight
- Supported by a mounting ring which contains holes for riveting when placed around a hole in the tank. It can also be welded or brazed to the tank.
- Heavy heat and impact-resistant glass globe eliminates breakage and resultant contamination of food from glass particles
- Relamping is easily accomplished by removal of the two thumb-screws which fasten the body to the mounting ring
- The flexible cord or cable should be connected by an EC flexible coupling or CG Series connector

Standard Materials:

- Mounting ring – silicon bronze
- Fixture body – *Feraloy*® iron alloy
- Globe – heat-resisting glass

Standard Finishes:

- *Feraloy* – electrogalvanized and aluminum acrylic paint
- Bronze – natural

Size Ranges:

- Up to 100 watt, A-21 lamp

Certifications and Compliances:

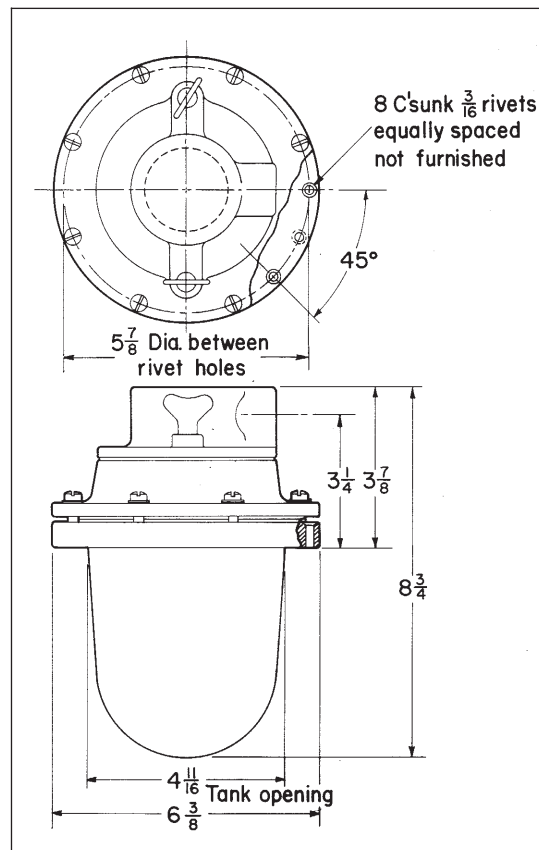
- UL Standard: 1571
- CSA Standard: C22.2



Furnished with EV10 Globe, and C166 Medium Base Lamp Receptacle

Hub Lamp Size	Size	Cat. #
1/2	50, 60, 75 or 100W, A-21	V160

Dimensions



12L EV Tank Luminaires

Cl. I, Div. 1 & 2, Groups C, D
 Cl. I, Zone I & 2 IIB
 Cl. II, Div. 1, Groups E, F, G – EVO only

Application:

- EV tank light luminaires are used:
- to light inside of tanks, vats, process vessels, etc.
 - in chemical plants, petrochemical plants and petroleum process industries
 - suspended over tank porthole by EC flexible hanger (EVO style)
 - mounted directly in tank wall (EVA)

Features:

- High light output
 - Compact design
- EVA160:**
- Furnished with tank ring having eight $\frac{3}{16}$ " holes for riveting to tank
 - Can be brazed if desired
 - Luminaire ring is attached to the tank ring by eight 1/4-20 Allen Head cap screws
 - Luminaire attached to luminaire ring by four wing screws
 - EC flexible luminaire support should be used so relamping can be accomplished without disturbing the globe

Standard Materials:

- Bodies – EVA: Receptacle housing and intermediate ring – *Feraloy*[®] iron alloy. Tank ring – silicon bronze; EVO: copper-free aluminum
- Globes: EVA – glass, heat and impact resistant; EVO – glass, heat strengthened plate glass

Standard Finishes:

- *Feraloy* iron alloy – cadmium electrogalvanized and aluminum acrylic paint; copper-free aluminum – aluminum acrylic paint; silicon bronze – natural

Size Ranges:

- $\frac{1}{2}$ " and $\frac{3}{4}$ " hubs

Capacity Ranges:

- EVO – 75 watt, reflector spot max.
- EVA – 100 watt, A-21 max.

Certifications and Compliances:

- NEC:
 - Class I, Division 1 and 2, Groups C, D – EVO and EVA
 - Class II, Division 1, Groups E, F, G – EVO only
- UL Standard: 844

Temperature Performance

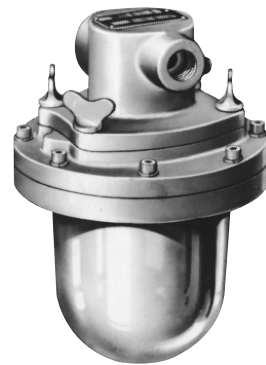
Data: (based on 40°C Ambient)

	Class I Groups C, D	Class II Groups E, F, G	Supply Wire (°C)
EVO2376	T3C	T3C	75
EVA160	T3C*	—	75

*All mounting positions

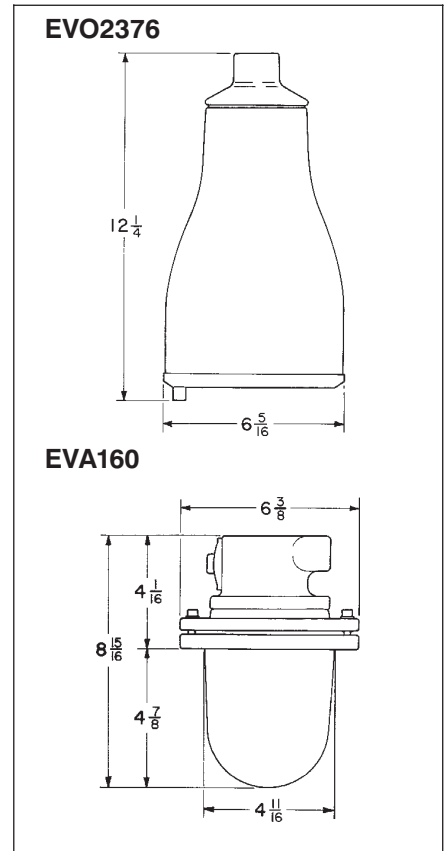


EVO2376



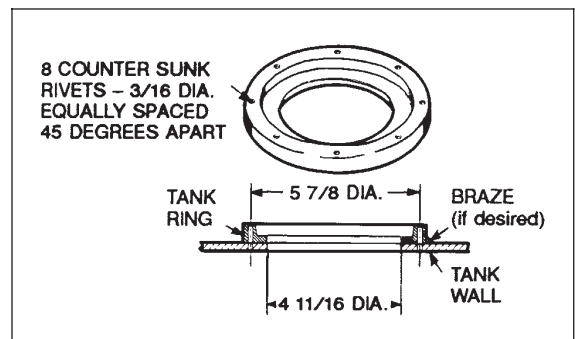
EVA160

Dimensions



Watts	Lamp (not furnished)	Hub Size	Cat. #
75	75R 30/SP reflector spot (medium base)	$\frac{1}{2}$ & $\frac{3}{4}$	EVO2376
100, A-21	Medium base	$\frac{1}{2}$	EVA160

Tank Ring Mounting (EVA160)



EVTL Explosionproof Task Light

Class I Groups B, C, D
Class I Zone I, IIB+H₂
Class II Groups E, F, G
Class III Simultaneous Service

Wet Locations
Marine Locations
NEMA 3, 3R, 4, 4X

12L

Application

EVTL task light luminaires are used:

- For various task lighting requirements in locations that are hazardous (classified) due to the presence of flammable gases or vapors, combustible dusts or easily ignitable fibers & flyings.
- in marine applications where water spray and corrosive atmospheres are considerations.
- in areas where conventional lighting is not acceptable due to size and/or location.
- in locations where an adequate light source is necessary for tank, instrument, and gauge applications.
- in porthole or sightglass applications where a spotlight is required for visibility inside tanks, vats and process vessels.
- in manufacturing plants, refineries, pharmaceutical, chemical, petrochemical, and other industrial process facilities, waste or sewage treatment facilities, grain processing and handling facilities and other heavy industrial applications.

Standard Materials:

- Housing—Copper-free aluminum
- 3/4" NPT hub and plug—Aluminum
- Mounting bracket(s) and External hardware—Stainless Steel
- Gasket—Silicone rubber
- Lens—Heat and impact resistant clear glass

Standard Finishes:

- Aluminum housing (exterior)—Corro-free epoxy powder coat
- Stainless Steel—Natural

Ratings (Electrical/Size)

Source/Wattage (Medium Base Lamps)

- 50PAR20 type—50W 120V halogen parabolic reflector. Lamp life 2000-2500 hrs.
- 130V lamps available to extend lamp life to 5000+ hrs.

Voltage

- 120V 60 Hz

Hub Size

- (1) 1/2" NPT
- For through feed, use EVTL-TF1

Certifications and Compliances:

• NEC/CEC

- Class I Division 1 & 2 Groups B, C, D
- Class II Group E, F, G
- Class III
- Class I Zone 1 & 2 Group IIB + H₂
- Wet locations
- Marine locations
- NEMA 4X

• NEC

- Simultaneous Presence

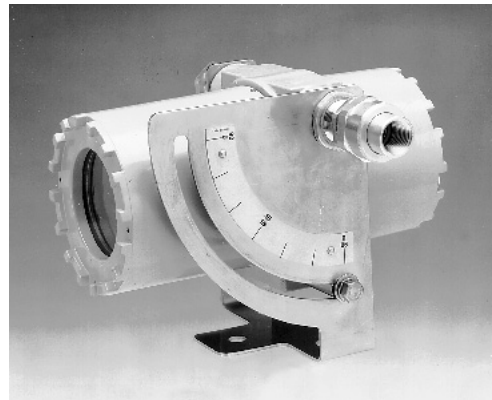
UL Standards

844—Hazardous (Divisions Classified) Locations
1571—Ordinary and Wet Locations, Marine
Outside Type

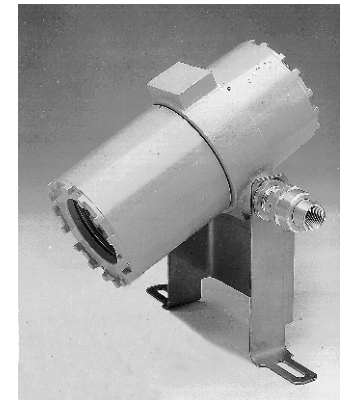
CSA Standards

C22.2 No. 137

Note: Install luminaire within aiming ranges shown on nameplate (See Dimensions)



EVTL1B50



EVTL1L50

Key Features

Class I, II, III, Simultaneous Presence

Class I Group B standard

Wet and Marine (NEMA 4X) Suitability

55° ambient suitability

Cast copper-free aluminum housing with Corro-free™ epoxy powder coat finish.

Stainless steel mounting brackets and hardware.

Two mounting styles bracket and leg

- Bracket (Universal)
- Leg (Site Glass)

Uses standard 50 watt PAR 20 medium base 120V lamps

Uses 50PAR20 130V lamps for added lamp life

50PAR20 lamps available in both flood and spot light patterns

Easy access interior

Seal within 5 ft. (not 18") of luminaire

Benefits

Suitable for most hazardous (classified) areas

Suitable for areas containing hydrogen

Perfect for hose down applications

Addresses higher ambients typical of industrial plants.

Superior corrosion resistance

Superior corrosion resistance

Maximize mounting flexibility

Ceiling, Wall or Base mounting

Site Glass mounting

Improved light output, economical, long life 2000-2500 hour light source

Increase lamp life to 5000+ hours while maintaining 76% lumen output

Vary the illumination characteristics by simply changing lamps

Reduced maintenance and lamp replacement time

Provides greater flexibility in seal location

Ordering Information:

Luminaire Cat. #	Conduit Entry	Mounting Style	Wattage
EVTL1B50	1/2"	Bracket (Universal)	50
EVTL1L50	1/2"	Leg (Site Glass)	50

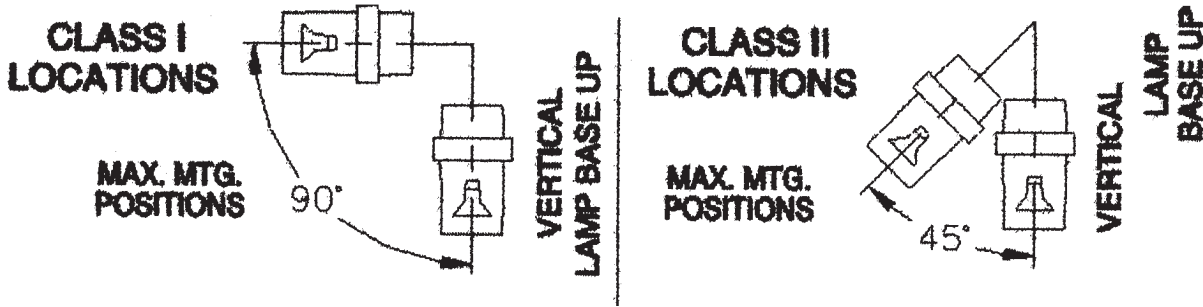
Temperature Performance Data:

Catalog Number	Maximum Ambient °C	Class I, Div. 1, B, C, D Class II, Div. 1, E, F, G Class III Simultaneous Presence	
		Class I, Zone 1, IIB + H ₂	Supply Wire °C
EVTL1B50	40	T3B	85
EVTL1L50	40	T3B	85

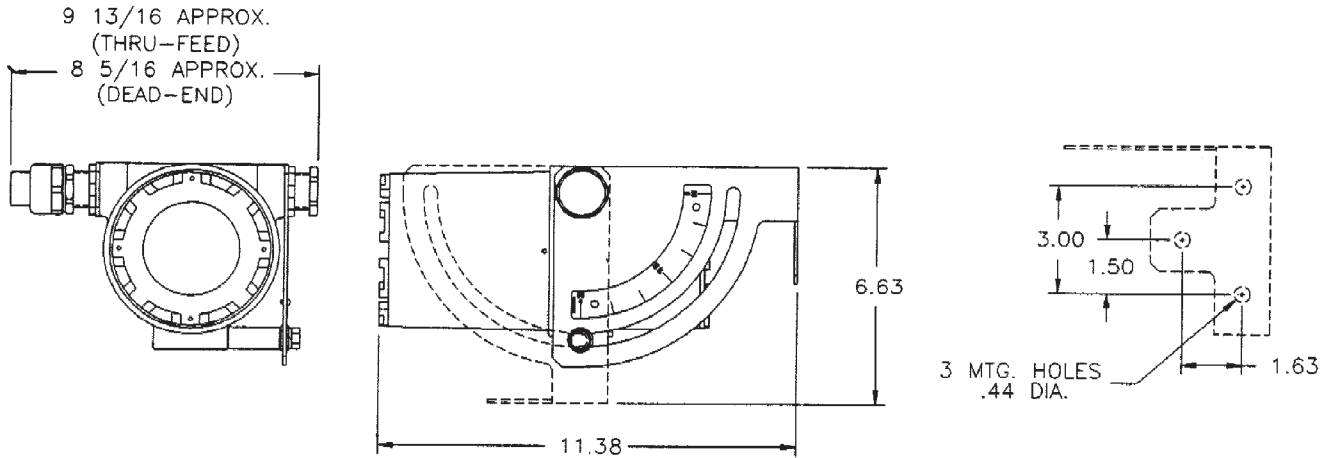
12L EVTL Explosionproof Task Light

Dimensions and Weights

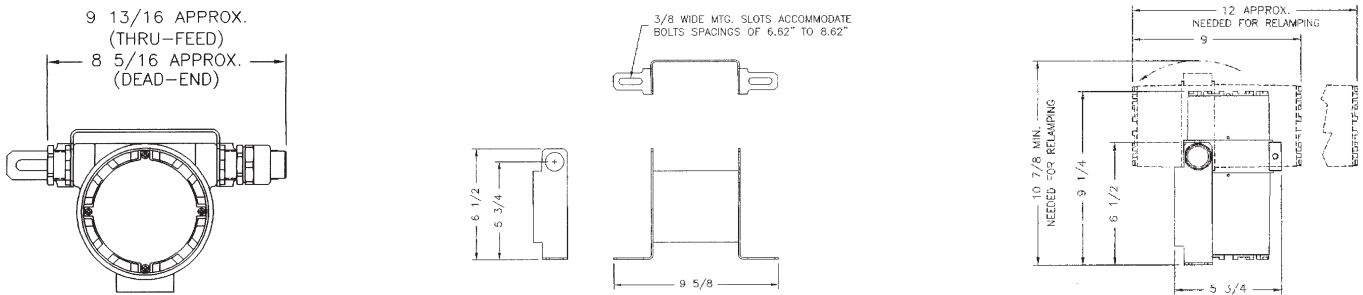
Aiming Range



Dimensions: Bracket Mount

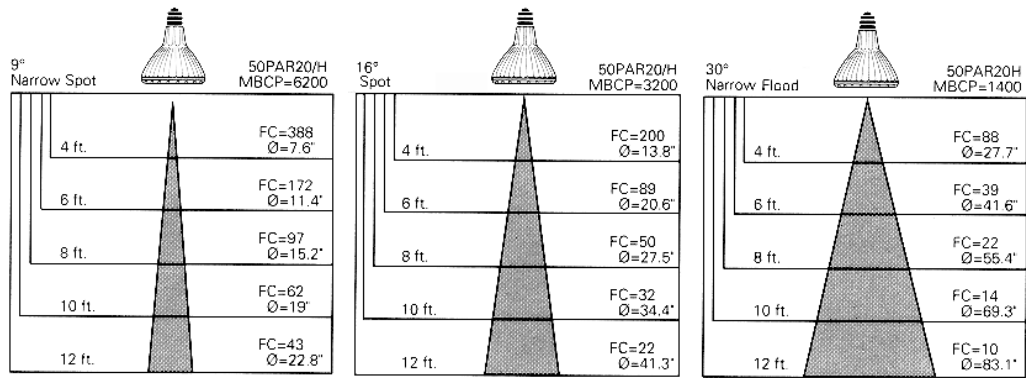


Dimensions: Leg Mount



Specialty Lighting
12L

Net Luminaire Weights (lbs)	
Luminaire Catalog	Weight (lbs.)
EVTL1B50	7
EVTL1L50	7
EVTL-TF1	1/2



MBCP = Maximum Beam Candlepower Ø = Diameter of beam spread in inches FC = Footcandles measured at 0°

Lamp Light Distribution – (Philips lamp data shown. Similar for other manufacturers)
 Data shown is for 120 volt lamps
 For 130 volt lamps adjust data using a .76 multiplier

12L ELG Gauge Luminaires

Cl. I, Div. 1 & 2, Groups C, D
 Cl. 1, Zone 1 & 2 IIB
 Explosionproof

Application:

ELG Gauge lights are used:

- in hazardous areas to illuminate liquid level gauges over entire length of gauge
- clamped to **rear** of liquid level gauge and conduit is attached to the ELG hubs. Light is reflected by Lucite reflector along the entire length of the gauge. Liquid level shows on front of gauge. All light is concentrated on liquid column – no spill light.

Features:

- Even illumination over entire length of gauge
- Variety of sizes to fit many gauges
- Several lights can be used in tandem to illuminate long gauge

Standard Materials:

- Body – copper-free aluminum
- Reflectors – plexiglass

Standard Finishes:

- Body – electrogalvanized and aluminum acrylic paint

Size Ranges:

- 1" conduit through feed

Capacity Ranges:

- 120V medium screw base "A19" style incandescent lamp 58W maximum
- 25 watt – medium base – 1000 hour life
- 52 watt – medium base – 2500 hour life
- 58 watt – medium base – 3000 hour life

Certifications and Compliances:

- NEC/CEC:
 Class I, Division 1 and 2, Groups C, D

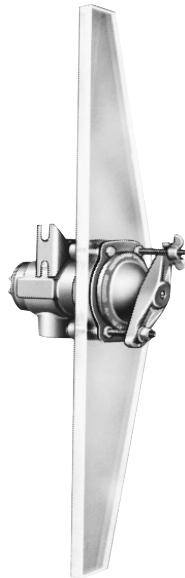
Temperature Performance

Data: (based on 40°C ambient)

58 Watt – T4A
 Maximum

Options:

Description	Suffix to be Added to Cat. No.
• Group B suitability	GB



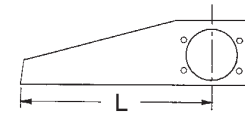
ELG329 with LE49 reflector

Ordering Information:

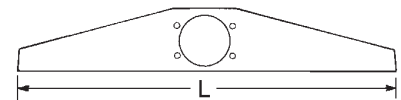
Description	Catalog No.	Length (L) (inches)
Gauge Light (less reflector)	ELG329	—
Reflector	LE34	4½
– Short style	LE35	5½
Reflector	LE46	13
– Long style	LE47	15
	LE48	17
	LE49	19¾
	LE410	22
	LE412	25¼
	LE413	26¾

Dimensions

Plexiglass reflectors
 Short style



Long style



Suggested Lamps (Lamps not furnished)

Manufacturer	Catalog Number			Volts
	25 Watt	52 Watt	58 Watt	
General Electric	25A	60A/52WMP/98		120
Osram/Sylvania	25A	60A/52/SS/XL	58A19/62	120
Philips	25A	60A-52A/99/EW		120