

## Boom reflector for Cree's MC-E series of LEDs



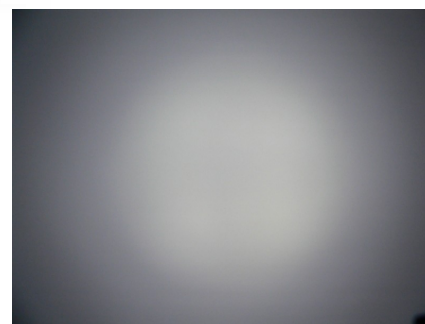
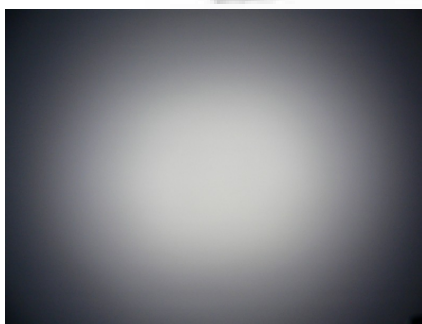
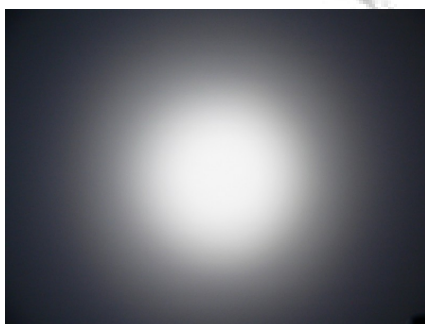
www.cree.com



- Specially designed for Cree's MC-E series of LEDs.
- Special care taken to make a uniform white or warm white illumination. Lenses work well with other colors, too.
- Lens material optical grade metallized ABS. Allows use of high current and temperature conditions
- Best available optical efficiency, up to 90%.

## LENS TYPES

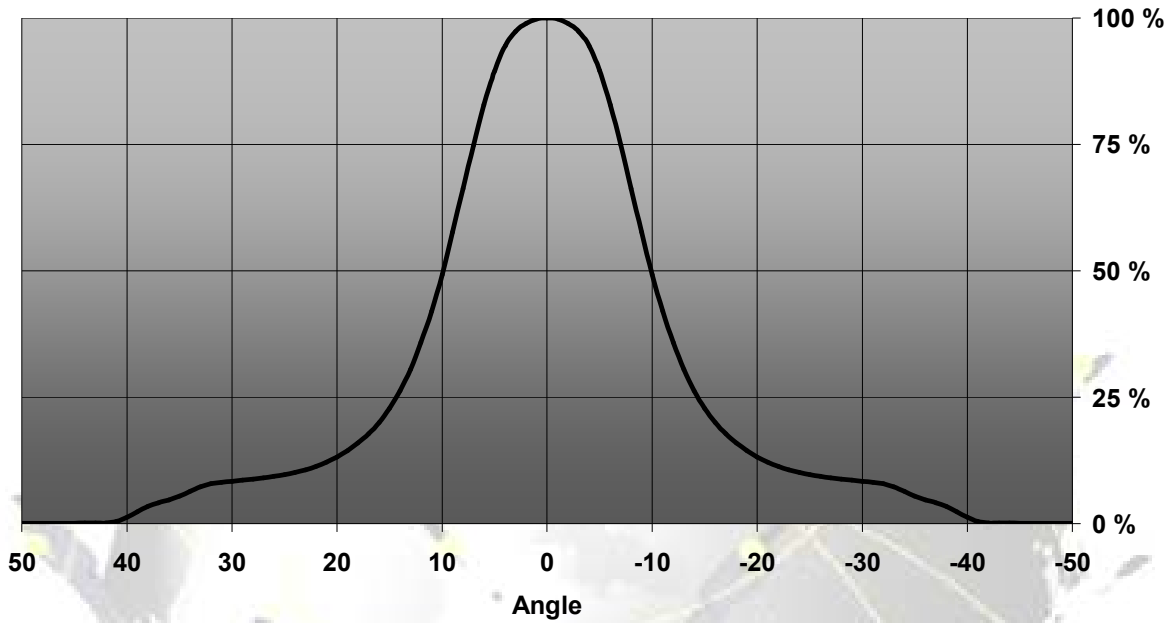
NAME	ORDERING CODE	FWHM Angle
BOOM-MC-S	BOOM-MC-S (n. C10569)	10
BOOM-MC-M	BOOM-MC-M (n. C10570)	19
BOOM-MC-W	BOOM-MC-W (n. C10571)	24



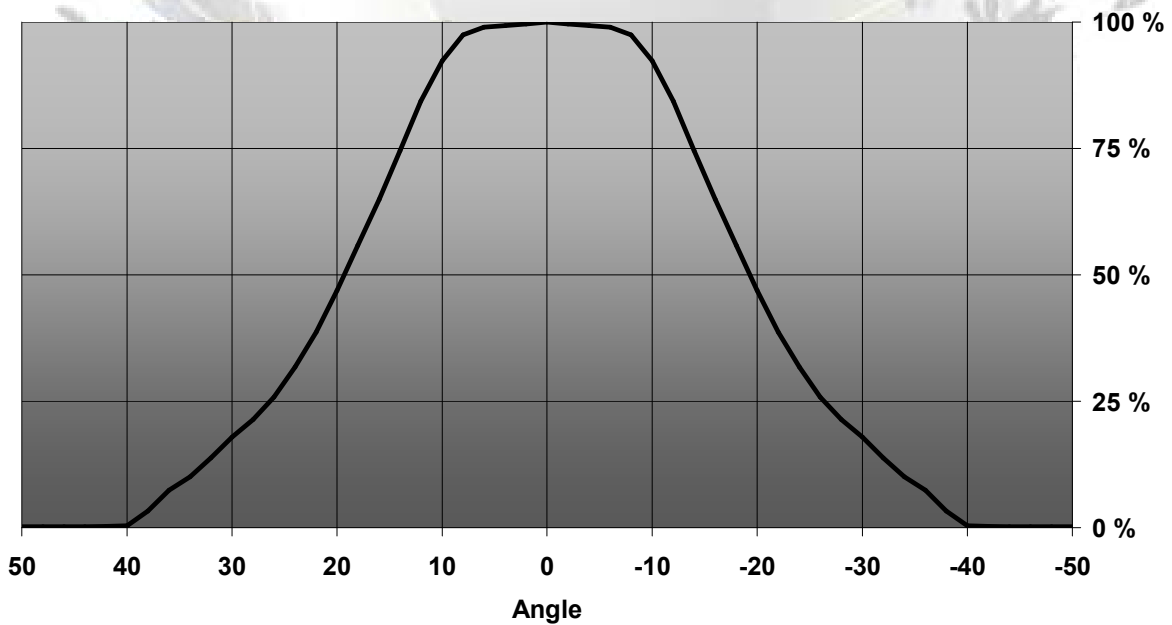
© Ledil Oy – PRELIMINARY - Subject to change without prior notice

## MEASUREMENT DATA

Relative Intensity of BOOM-MC-S

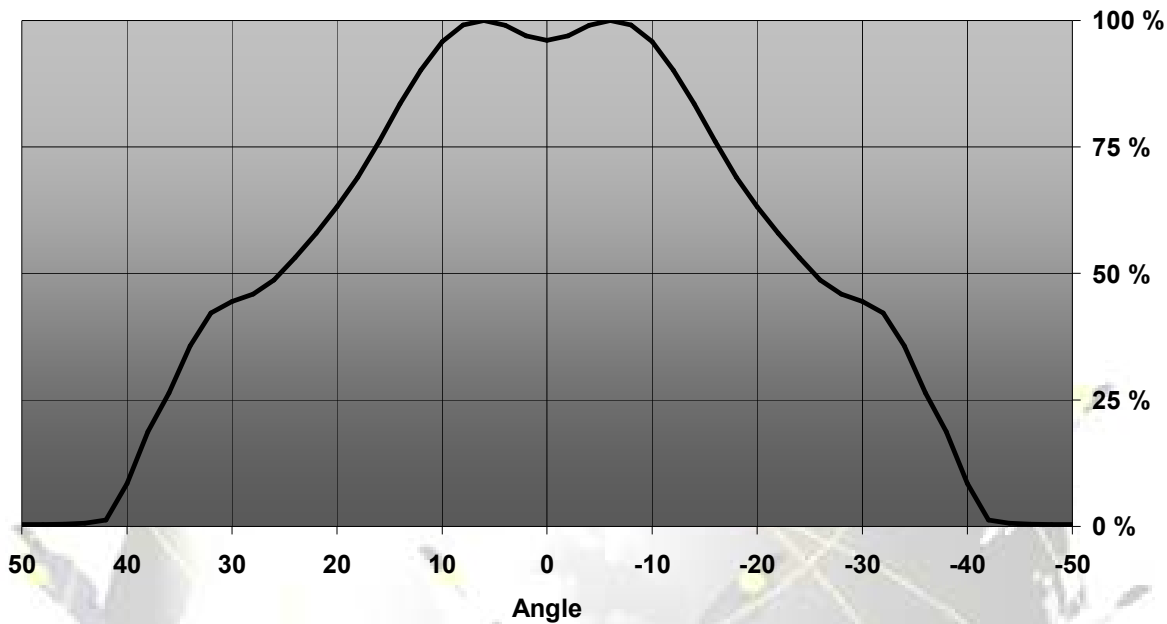


Relative Intensity of BOOM-MC-M



© Ledil Oy – PRELIMINARY - Subject to change without prior notice

Relative Intensity of BOOM-MC-W



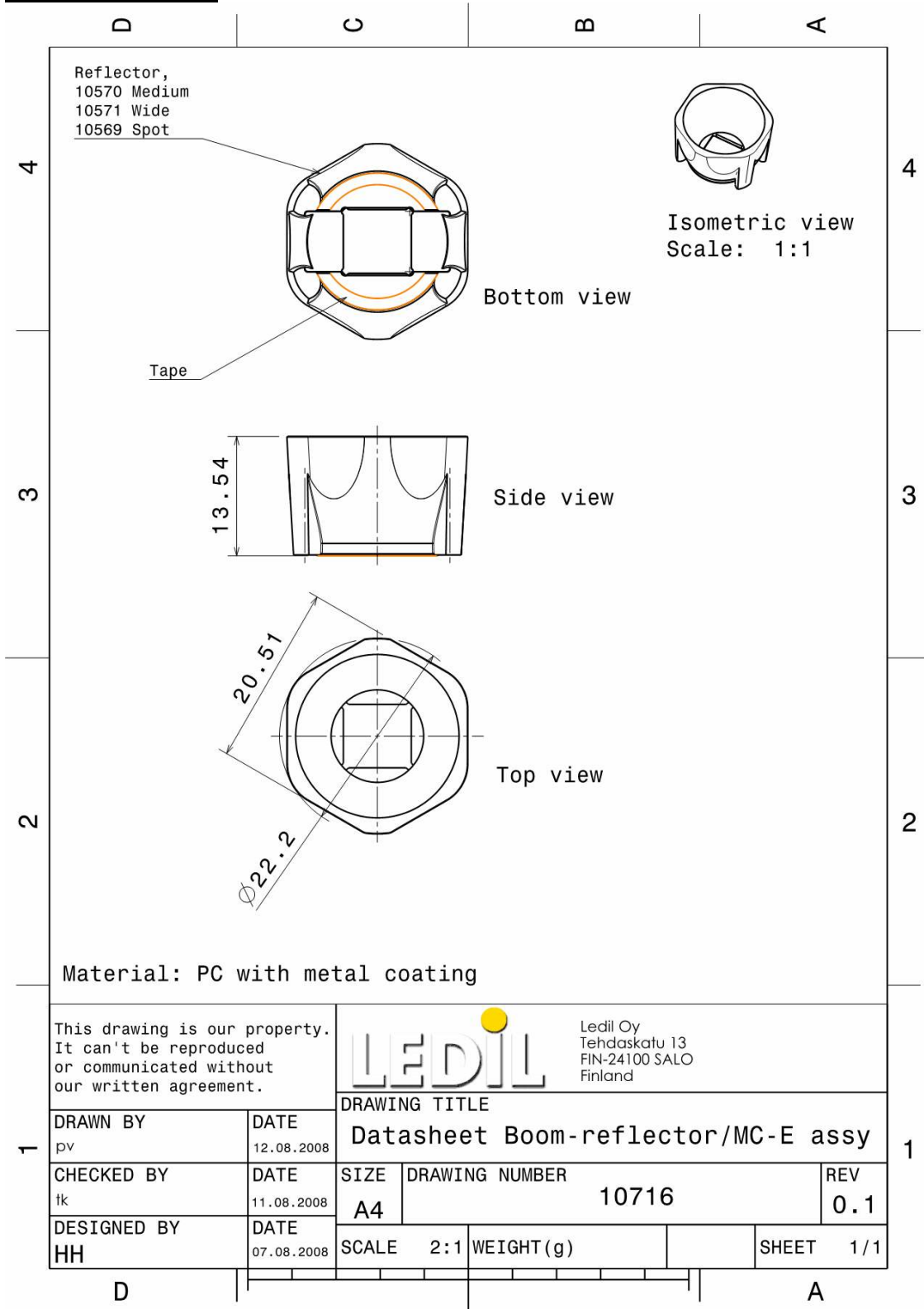
© Ledil Oy – PRELIMINARY - Subject to change without prior notice

Ledil Oy  
 Tehdaskatu 13  
 FIN-24100 SALO, Finland

[www.ledil.com](http://www.ledil.com)  
 email: [ledil@ledil.com](mailto:ledil@ledil.com)  
 FAX: +358-2-733 8001

2008-09-26

## DRAWINGS



This drawing is our property.  
It can't be reproduced  
or communicated without  
our written agreement.



Ledil Oy  
Tehdaskatu 13  
FIN-24100 SALO  
Finland

DRAWN BY pv		DATE 12.08.2008	DRAWING TITLE Datasheet Boom-reflector/MC-E assy		
CHECKED BY tk	DATE 11.08.2008	SIZE A4	DRAWING NUMBER 10716	REV 0.1	
DESIGNED BY HH	DATE 07.08.2008	SCALE 2:1	WEIGHT (g)	SHEET 1/1	

© Ledil Oy - PRELIMINARY - Subject to change without prior notice