

## Boomerang, reflector for LedEngin 5w & 10w LEDs



**LedEngin, Inc.**  
www.ledengin.com

- Specially designed for LedEngin 10w series of LEDs, but works also fine with LedEngin 5w LEDs.
- Special care taken to make a uniform white or warm white illumination. Lenses work well with other colors, too.
- Lens material optical grade metallized ABS. Allows use of high current and temperature conditions
- Best available optical efficiency, up to 90% using LedEngin 10w LEDs and using LedEngin 5w LEDs 89%.

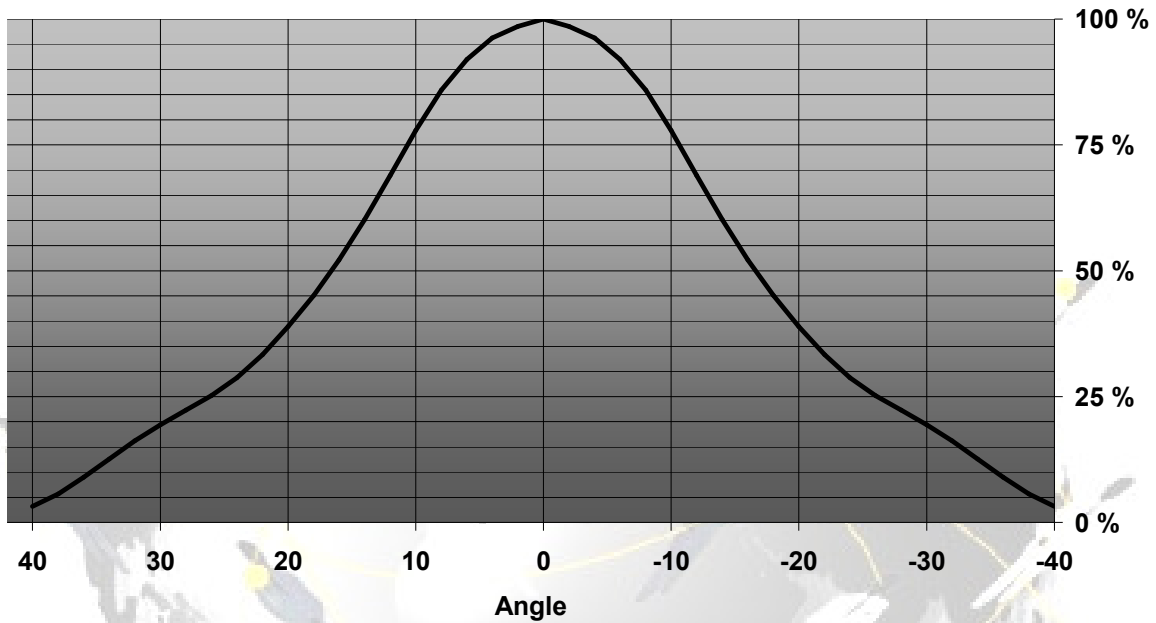
### LENS TYPES

NAME	ORDERING CODE	FWHM Angle
BOOMERANG 10w	Boomerang (n. 10437)	±16° x ±16°
BOOMERANG 5w	Boomerang (n. 10437)	±14° x ±12°

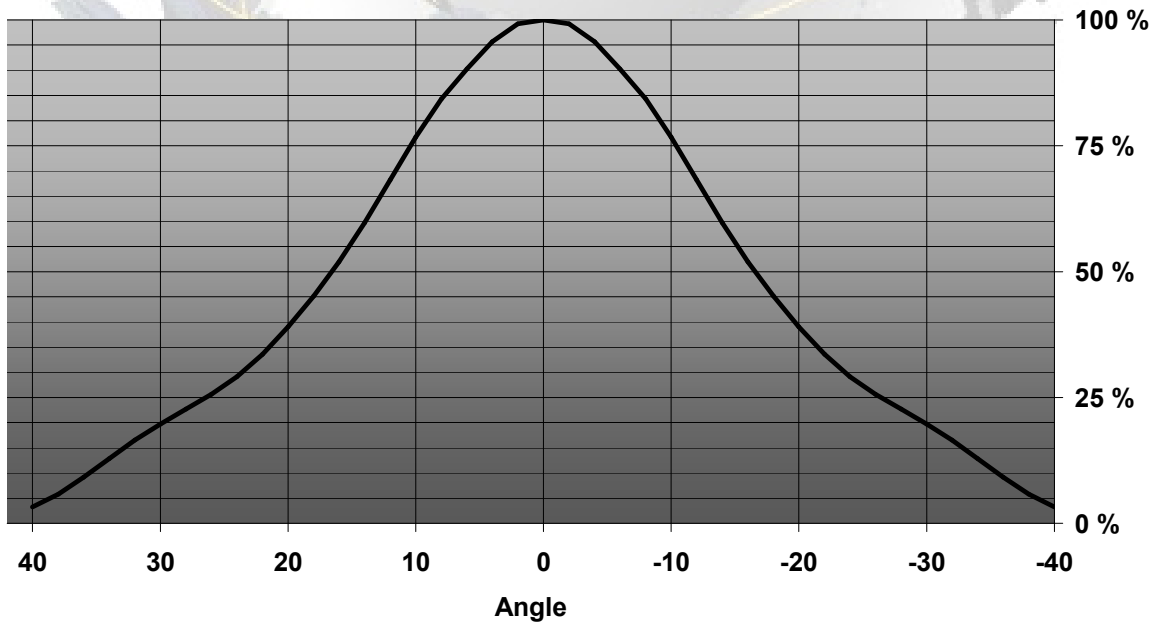
© Ledil Oy – PRELIMINARY - Subject to change without prior notice

## MEASUREMENT DATA

Boomerang reflector with LedEngin 10W LED (horizontal)

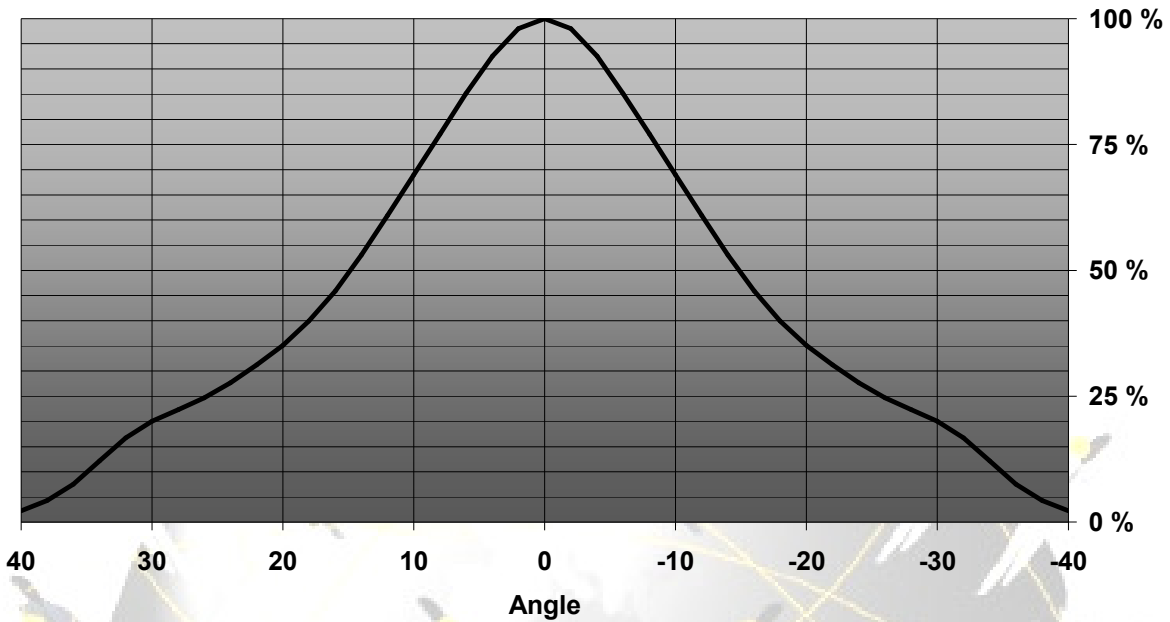


Boomerang reflector with LedEngin 10W LED (vertical)

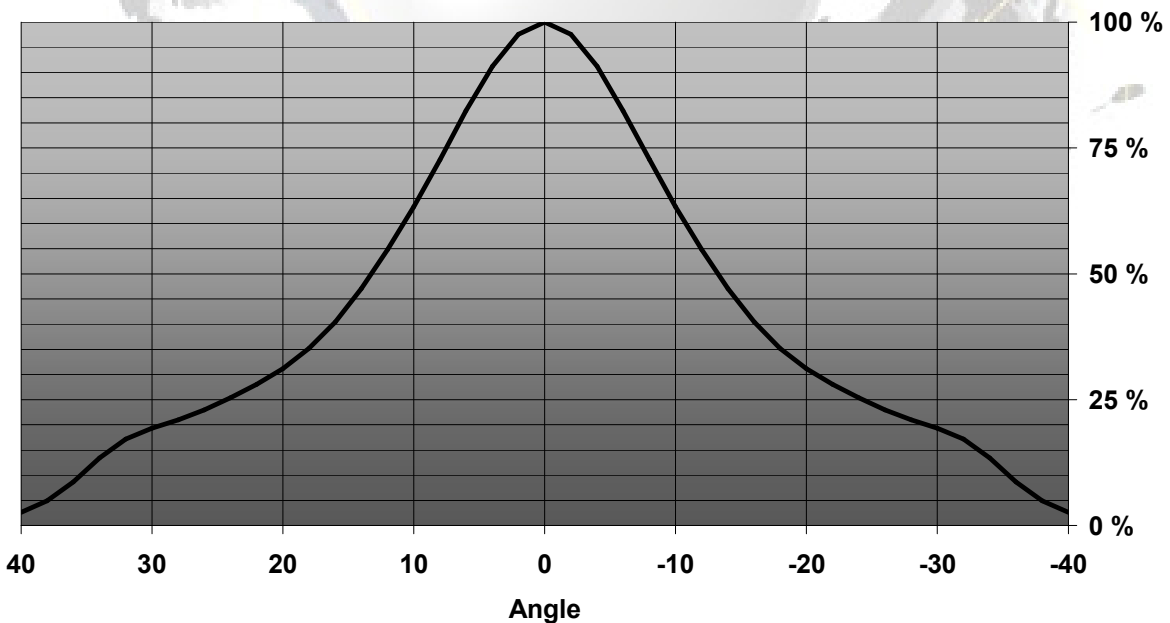


© Ledil Oy - PRELIMINARY - Subject to change without prior notice

Relative Intensity of Boomerang (LedEngin 5w horizontal)



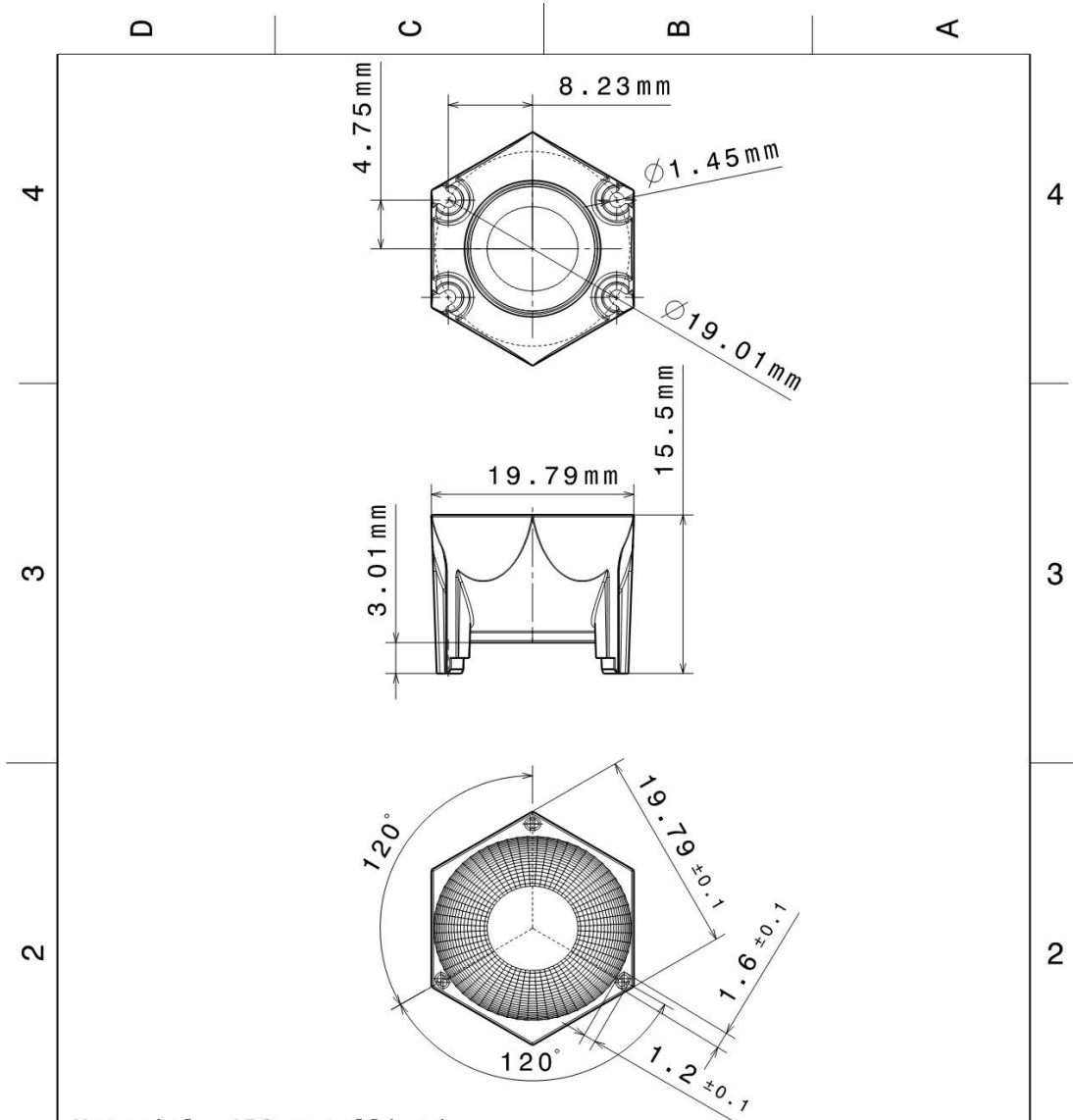
Relative Intensity of Boomerang (LedEngin 5w vertical)



EULUMDAT & IES FILES AVAILABLE BY REQUEST

© Ledil Oy - PRELIMINARY - Subject to change without prior notice

## DRAWINGS



Material: ABS metallized

This drawing is our property. It can't be reproduced or communicated without our written agreement.



Ledil Oy  
Tehdaskatu 13  
FIN-24100 SALO  
Finland

DRAWING TITLE		Boomerang-reflector	
DRAWN BY RM	DATE 21.11.2007	SIZE A4	DRAWING NUMBER 10437
CHECKED BY HH	DATE 21.11.2007	SCALE 1:1	REV 0.1
DESIGNED BY HH	DATE 21.11.2007	WEIGHT (g)	SHEET 1/1



---

© Ledil Oy – PRELIMINARY - Subject to change without prior notice

Ledil Oy  
Tehdaskatu 13  
FIN-24100 SALO, Finland

[www.ledil.com](http://www.ledil.com)  
email: [ledil@ledil.com](mailto:ledil@ledil.com)  
FAX: +358-2-733 8001

2008-07-03