

## TINA lens for Osram Dragon LEDs

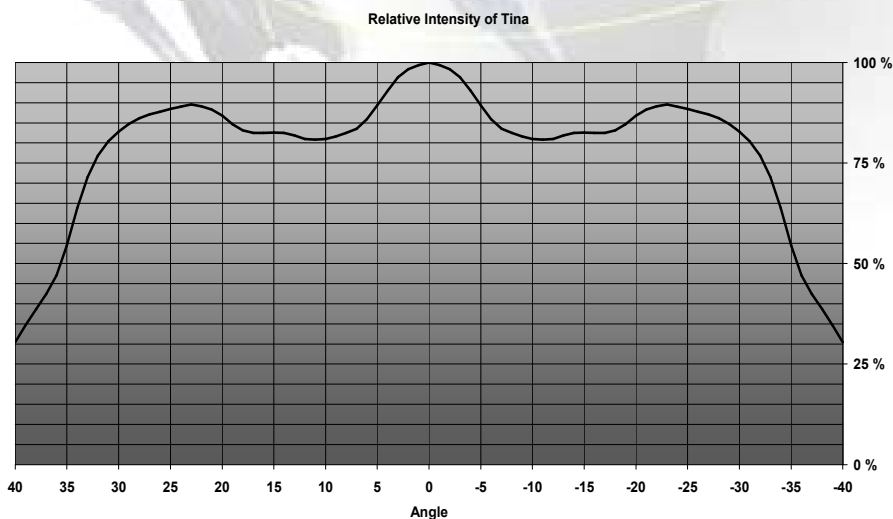


- Lens material optical grade PMMA with high UV and temperature resistance (105°C/220°F). Lens holder molded of high quality white ABS.
- High optical efficiency, >80%
- Attaching of the lens holder directly on the Dragon package by snap fits. For detailed mounting information, please look at the drawing and the photograph
- Very small and compact dimensions: Diameter 16 mm, height 8.63 mm

## LENS TYPES

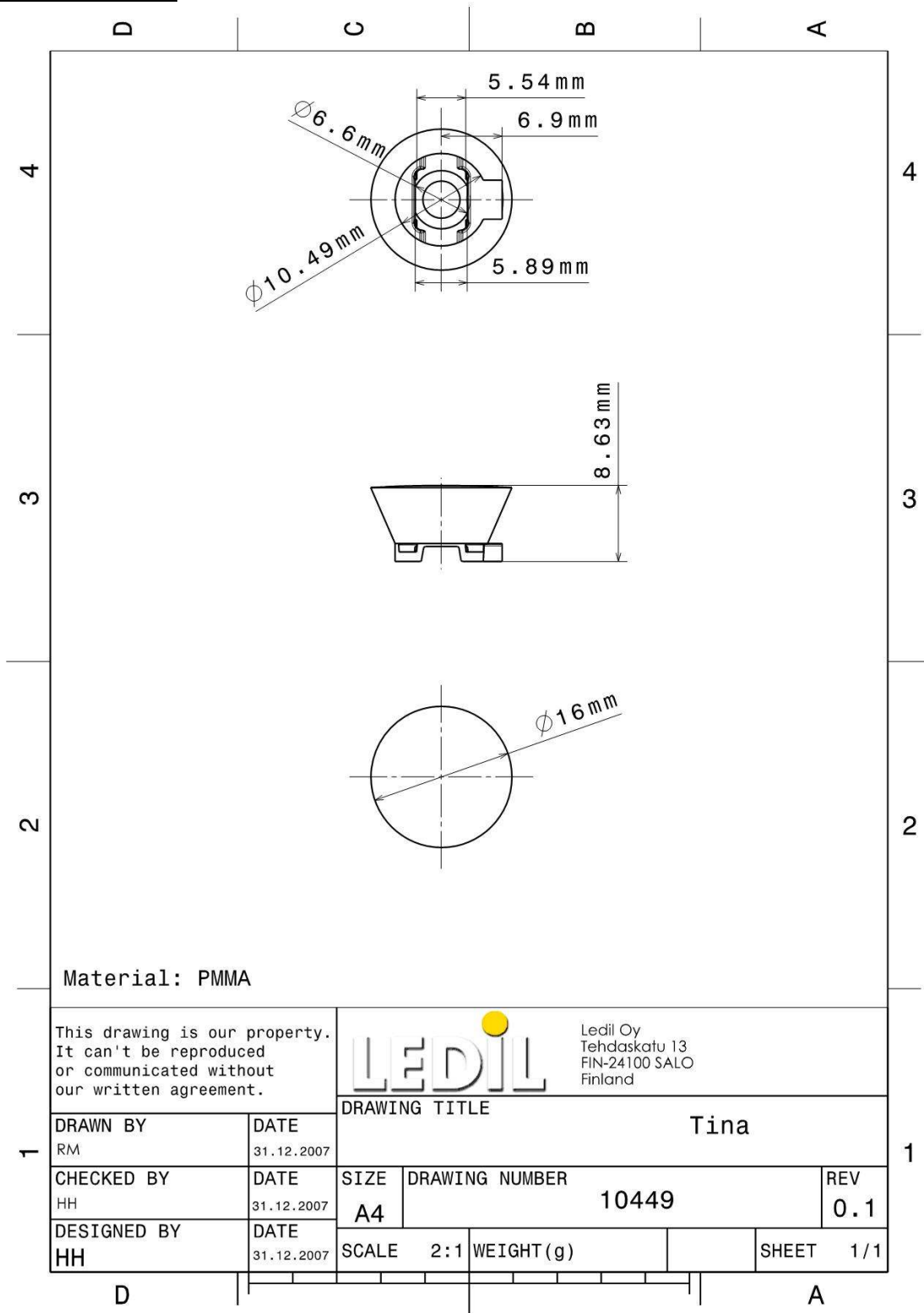
NAME	ORDERING CODE	FWHM Angle
TINA	10449	±36°

## MEASUREMENT DATA



© Ledil Oy – PRELIMINARY - Subject to change without prior notice

## DRAWINGS



© Ledil Oy - PRELIMINARY - Subject to change without prior notice